



JAPAN P&I NEWS

外航組合員各位

中国—Guangzhou（広州）Guishan 錨地における衝突防止のための注意喚起

中国のコレスポンデント Oasis P&I Services Company Limited から、中国 Guangzhou（広州）の Guishan 錨地における注意喚起に関する情報を入手しましたので、添付のとおりご案内します。

洪水や台風の時節が近づくと、Guishan 錨地と Pearl River 河口付近の海域では、海流と風が激化します。最近、この海域ではさまざまな原因によって船舶の衝突事故が増加しているとのことです。

Guishan 錨地とその周辺海域における注意事項

1. Guishan 錨地とその周辺海域は、船舶が Pearl River 河口を航行する際に合流する海域です。18GS 錨地と 17GS 錨地はどちらも多くの船舶が停泊し混雑しているため、航行スペースが限られ操船が困難になります。
2. 18GS と 17GS 錨地の間の水域は船舶が加速・減速に加えて水先人が乗降する地点でもあるため、言語の壁などにより船舶間の意思疎通がうまくいかない場合に衝突リスクが高まります。
3. Pearl River 河口内の異なる港に向かう船舶が混在し、急な航路変更などもあるため、複雑な航行状況となります。
4. 18GS 錨地に停泊している船舶は比較的大型のものが多く、夜間の灯火と Guishan 島の夜の観光照明が混在し、船舶の見張りに混乱をもたらす可能性があります。

安全のため、状況を十分に把握できない場合は早期に減速するようにしてください。錨地に停泊する際は見張りを強化し、潮流の変化に注意して、緊急時に備えてください。VHF で他船と相互に連絡を取り、言語によるコミュニケーションが確立できない場合には、汽笛で注意を促すか、VHF08/09 または電話 +86 12395 で Guangzhou VTS に支援を求めてください。

以上

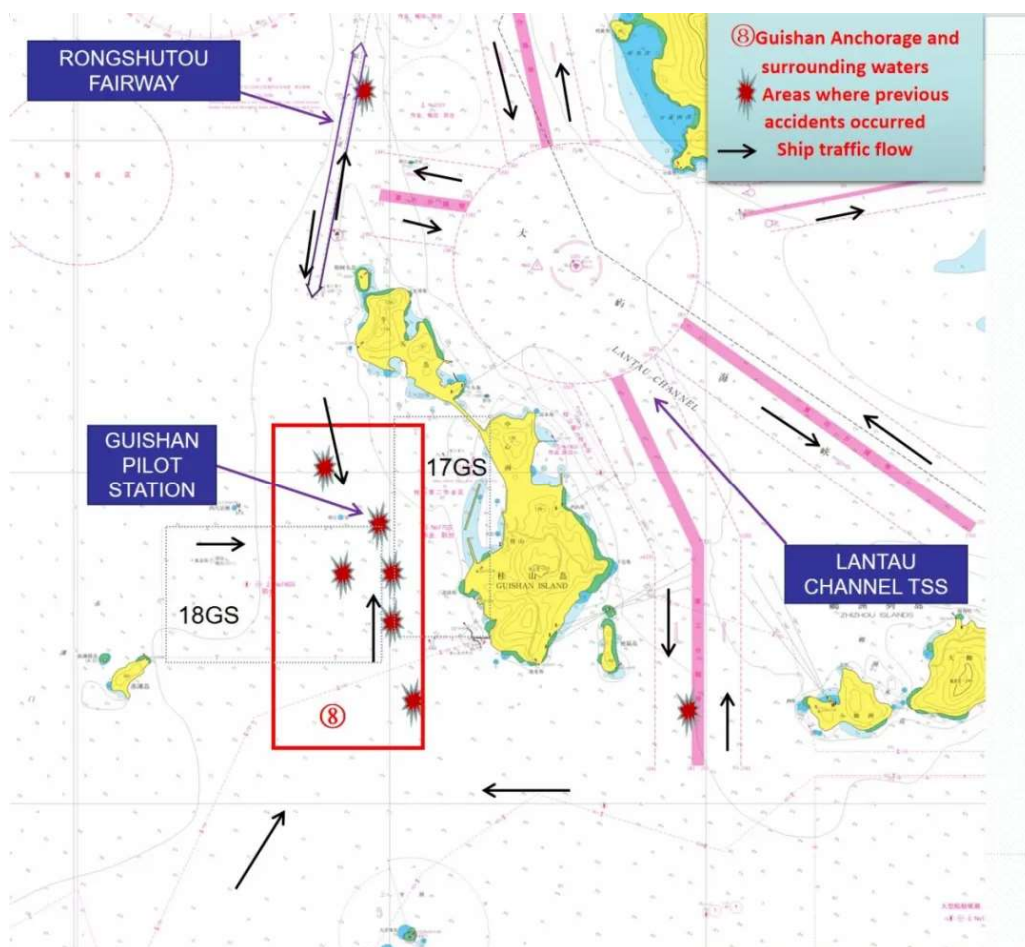
添付資料 : Oasis Circular No.2407

Date: 09 July 2024

Oasis Circular No.: 2407

Subject: Special attention is required when ships navigate in the waters of Guishan anchorage of Guangzhou, China

When flood and typhoon season approaches, currents and winds would intensify at Guishan anchorage and its surrounding waters of the Pearl River Estuary. Recently we have seen an increasing number of ship collision incidents in this area due to various reasons. The frequent accident locations are marked in the diagram below.



Schematic diagram of risky locations in Guishan anchorage and its surrounding waters

Potential hazards in Guishan anchorage and its surrounding waters

1. Guishan anchorage and its surrounding waters are the converging waters when ships navigate through the Pearl River Estuary. Many merchant ships anchor at the 18GS anchorage before entering the ports, and many fishing boats and offshore ships anchor at the 17GS anchorage. Both anchorages are busy with ships, which results in limited maneuvering space and difficulty in ship handling.
2. The waters between the 18GS and the 17GS anchorages are the customary route for ships entering or leaving the ports, which also serve as the boarding and disembarking points for pilots. Ships often accelerate, decelerate, or maneuver in this area for picking up or disembarking pilots, which may increase the risk of collision because of ineffective communication between ships due to language barriers.
3. Ships often cross the customary route or heave up anchor to head for various ports within the Pearl River Estuary with sudden changes in course, which easily leads to crossing situations and makes the traffic flow more complicated.
4. Ships anchored at the 18GS anchorage are relatively large. Their deck lights and the night tourism lighting of Guishan Island may cause difficulty or confusion to ships' lookout.

Suggestions

1. Ships shall make full use of the rudder and the engine to avoid collision incidents and slow down at an early stage if the situation cannot be assessed adequately. When anchoring, ships shall maintain strengthened lookout, be aware of the change of tides and currents and have the engine prepared in case of emergency.
2. Ships shall display appropriate lights and shapes in line with regulations, engage extra watchman on the bridge, stay vigilant, use radar for long and short-range scanning to learn the movements of nearby ships at an early stage. Ships shall maintain contact with each other via VHF in case the traffic becomes complicated.
3. Ships shall maintain constant communication with the pilot station and make preparations in advance before the pilot boards or disembarks. In the meantime, ships shall take extra care when maneuvering to avoid colliding with surrounding ships.
4. Ships shall maintain safe speed and try to avoid making large turns or acceleration. If effective communication cannot be established due to language barriers, ships shall employ all alternative measures, such as using the whistle to alert other ships, contact Guangzhou VTS via VHF08\09 or via telephone No. +86 12395 for assistance.

We hope the above is of assistance. If there is any query, please feel free to contact us at oasis@oasispandi.com any time.

Best regards,

Oasis P&I Services Company Limited