



JAPAN P&I NEWS

To the Members

Establishment of a new route for entering and going out Kurushima Kaikyo Traffic Route

Following a series of collision accidents in Kurushima Kaikyo, new safety measures will be implemented from 10 a.m. on 1 July 2024. For more information on the safety measures, please refer to the 6th Regional Coast Guard Headquarters website below as well as the the attached leaflet.

6th Regional Coast Guard Headquarters website: [Safety measures in the west-side entrance/exit of Kurushima Kaikyo Traffic Route](#). (Japanese only.)

Yours faithfully,

The Japan Ship Owners' Mutual Protection & Indemnity Association

Attachment: Leaflet made by Japan Coast Guard

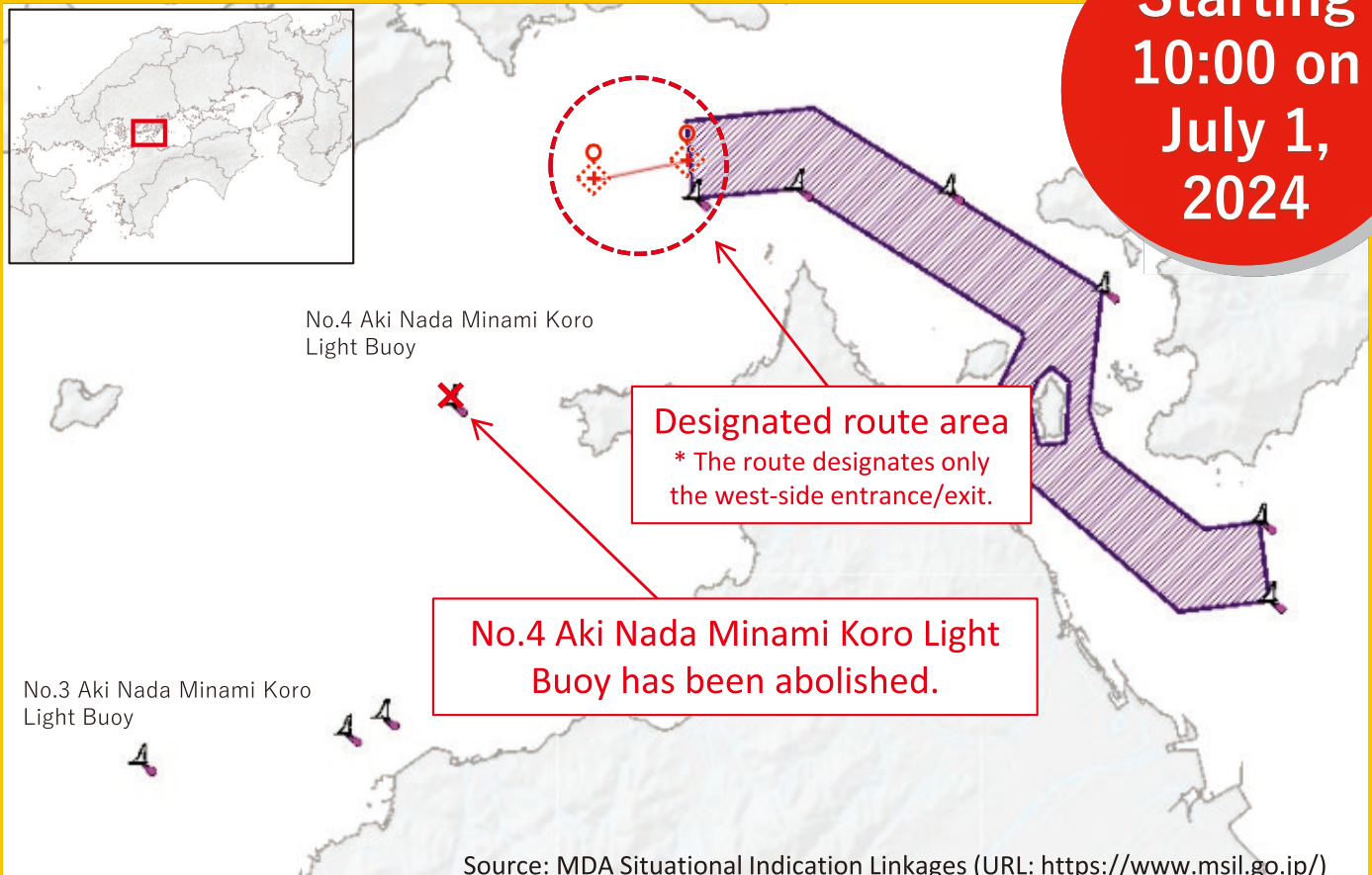


Establishment of a new “route” for entering and going out Kurushima Kaikyo Traffic Route

Vessels navigating Kurushima Kaikyo Traffic Route must navigate the route designated by public notification based on Article 25-2 of the Act on Maritime Traffic Safety. (See the reverse side for an overview of the route.)

With the designation of this route, No.4 Aki Nada Minami Koro Light Buoy has been abolished and the nearby recommended traffic route has been shortened.

Starting
10:00 on
July 1,
2024



For details concerning the route designation, indication of virtual AIS route markings, and abolition of the light buoy, see the 6th Regional Coast Guard Headquarters homepage.

<https://www.kaiho.mlit.go.jp/06kanku/safety/kurushima-keiroshitei.html>

Inquiries

Navigation Safety Division, Maritime Traffic Department,
6th Regional Coast Guard Headquarters
3-10-17 Ujina Kaigan, Minami-ku, Hiroshima, Hiroshima Prefecture
082-251-5111 (front desk)



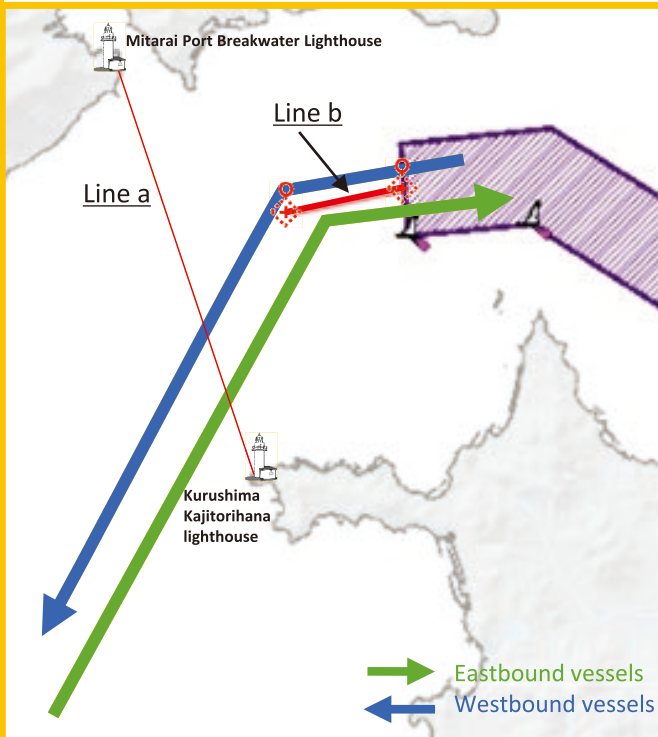
6th Regional Coast Guard
Headquarters homepage

Starting
10:00 on
July 1,
2024

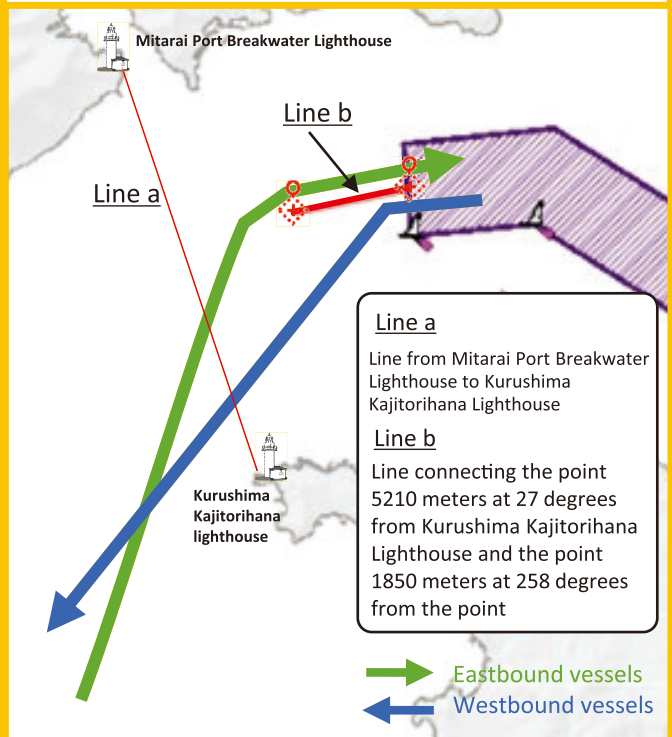
<Route overview>

1. Vessels intending to navigate westward through Kurushima Kaikyo Traffic Route and then intending to cross Line a should not cross Line b.
2. Vessels intending to navigate eastward to Kurushima Kaikyo Traffic Route after crossing Line a should not cross Line b.

<North current>



<South current>



Line a
Line from Mitarai Port Breakwater Lighthouse to Kurushima Kajitorihana Lighthouse

Line b
Line connecting the point 5210 meters at 27 degrees from Kurushima Kajitorihana Lighthouse and the point 1850 meters at 258 degrees from the point

Source: MDA Situational Indication Linkages * Image of navigation route for vessels navigating Aki Nada Minami Koro

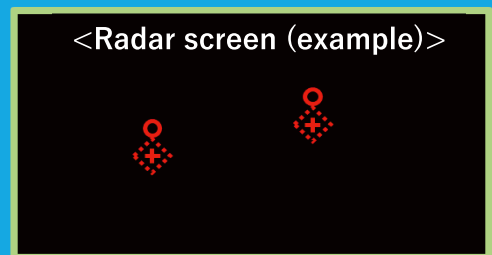
Indication of route ends

The route is indicated at the east end and west end by virtual AIS route markings. Actual light buoys are not installed.

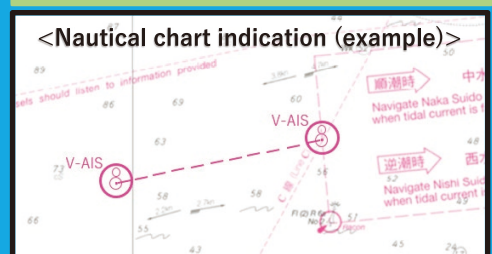
V/KURUSHIMA-WEST-A
34-09-24 N 132-53-55 E

V/KURUSHIMA-WEST-B
34-09-37 N 132-55-05 E

<Radar screen (example)>



<Nautical chart indication (example)>



Request for vessels not equipped with AIS

Virtual AIS route markings utilize AIS signals to indicate route markings that do not physically exist as symbols on navigational radar and electronic nautical charts. Virtual AIS route markings are not indicated on vessels not equipped with AIS. Such vessels should check the route using the most recent nautical charts, and enter the positions into a GPS plotter or similar device.

