



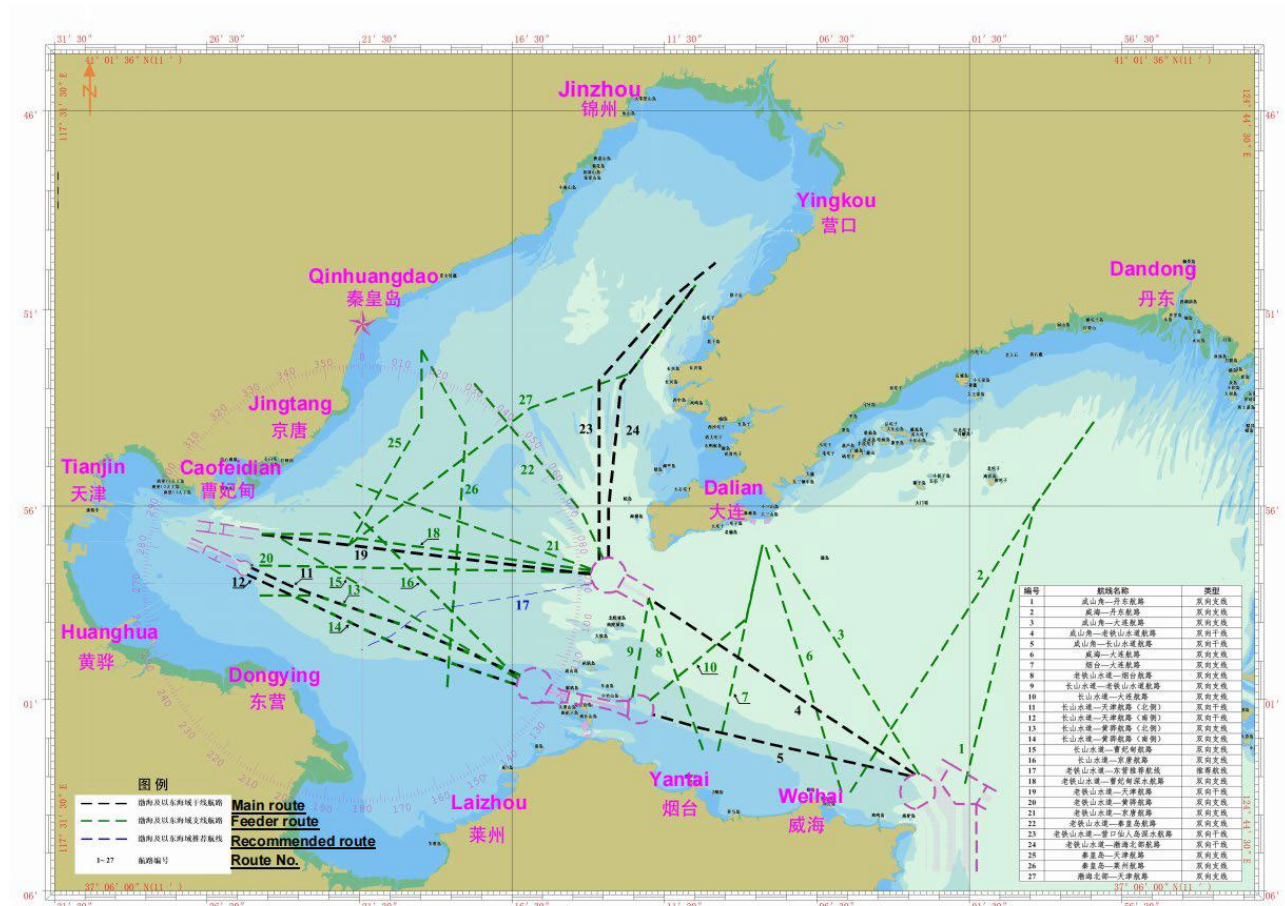
# JAPAN P&I NEWS

To the Members

**China—MSA offices in the Bohai Rim jointly published 27 main public routes within the Bohai Sea and sea area to the east**

Local MSA offices of Tianjin, Liaoning, Hebei and Shandong jointly published 27 main public routes within the Bohai Sea and sea area to the east effective from 18 December 2023. This area has been frequent locations of collision incidents and fish farm claims in recent years.

The detail of the 17 routes area illustrated in the chart below.



We have obtained information 27 main public routes and MSA suggestions by Oasis P&I Services Company Limited. For details, please find attached their circular.

Yours faithfully,

**The Japan Ship Owners' Mutual Protection & Indemnity Association**

Attachment: Oasis Circular No. 2313



24 hour duty phone: +86 150 1080 6478

email: [oasis@oasispandi.com](mailto:oasis@oasispandi.com)

[www.oasispandi.com](http://www.oasispandi.com)

Shanghai Dalian Tianjin Beijing Qingdao

Guangzhou Xiamen Ningbo Hongkong

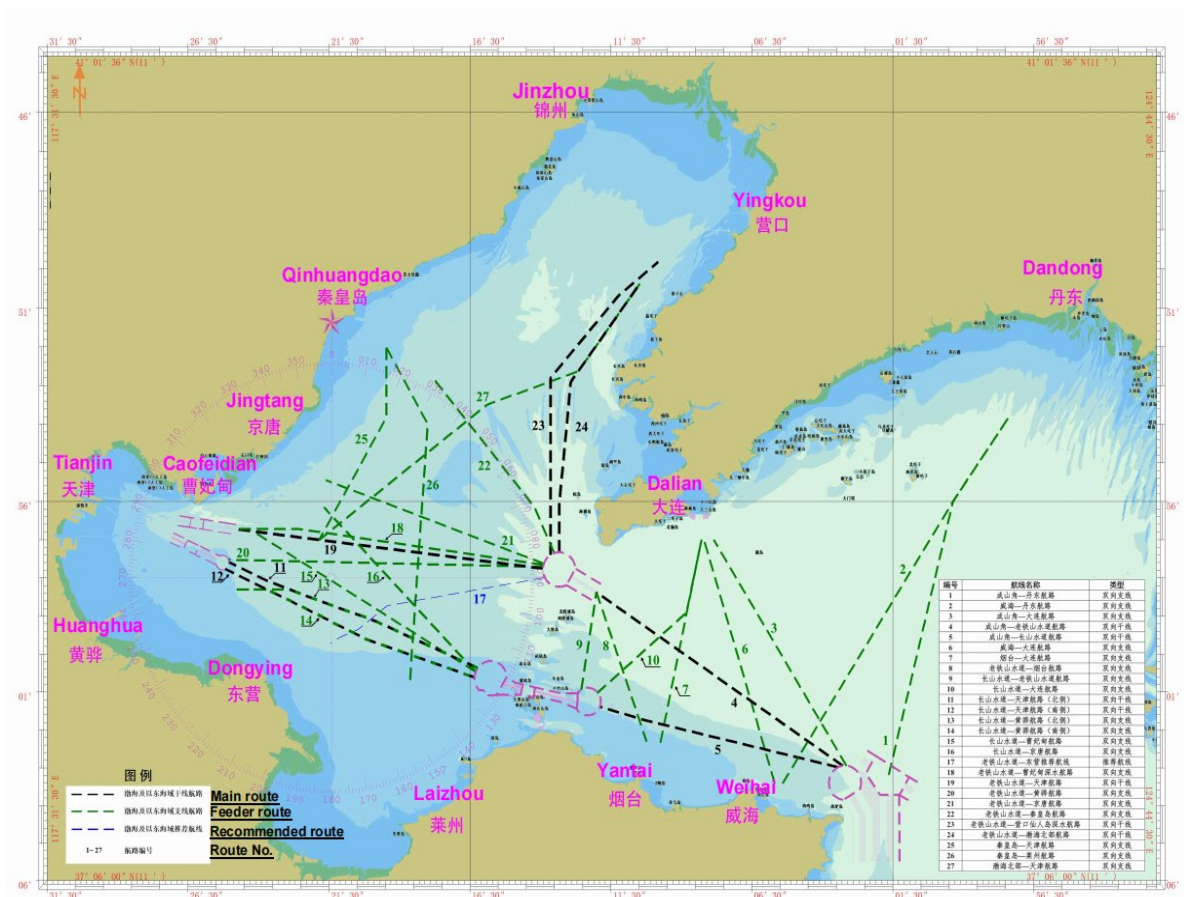
Date: 21 December 2023

Oasis Circular No.: 2313

**Subject: MSA offices in the Bohai Rim jointly published 27 main public routes within the Bohai Sea and sea area to the east**

Local MSA offices of Tianjin, Liaoning, Hebei and Shandong jointly published 27 main public routes within the Bohai Sea and sea area to the east effective from 18 December 2023. This area has been frequent locations of collision incidents and fish farm claims in recent years.

The 27 routes are illustrated in the chart below with details listed in the attachment.



**MSA suggestions on safe navigation**

1. The breadth of the route described in the attachment is theoretical breadth. When the route is limited by natural environment and navigating conditions, the breadth shall be that of navigable waters.
2. Vessels should use the routes as much as possible and navigate to the right of the central line wherever possible.
3. Vessels should comply with relevant provisions of COLREGS 1972 and other local regulations published by MSA. When navigating in the routes, vessels should pay attention to the changing water depth to avoid grounding. Special care should be taken when entering, leaving or crossing the route and passing through certain areas where many vessels navigate or channels intersect with each other.
4. When crossing a route, vessels are recommended to navigate vertically to the route or traffic flow as much as possible, on condition that it doesn't affect the safe navigation of other vessels.
5. To ensure safety and prevent collision and other marine incidents, vessels should avoid anchoring or operating within the route.

We hope the above is of assistance. If there is any query, please feel free to contact us at [oasis@oasispandi.com](mailto:oasis@oasispandi.com) anytime.

Best regards,

**Oasis P&I Services Company Limited**

No.	Name of route	Waypoint		Width	Course (forward and reverse)	Distance	Type of route	Remarks
				(nm)	(°)	(nm)		
1	Chengshanjiao—Dandong	A	123°00'00"E/37°37'00"N	3.0	—	0	Feeder route in both directions	
		B	123°25'00"E/38°56'00"N	3.0	14/ 194	81.3		
		C	123°47' 19"E/39°20'37"N	3.0	35/215	30.1		
2	Weihai—Dandong	A	122° 18'30"E/37°34'28"N	2.0	—	0	Feeder route in both directions	
		B	123°25'00"E/38°56'00"N	2.0/3.0	32/212	96.8		
		C	123°47' 19"E/39°20'37"N	3.0	35/215	30.1		
3	Chengshanjiao—Dalian	A	122°43'25"E/37°39'35"N	15.0	—	0	Feeder route in both directions	
		B	121°51'41"E/38°45'00"N	3.0	328/ 148	77.0		
4	Chengshanjiao—Laotieshan waterway	A	122°42'08"E/37°39'35"N	15.0	—	0	Main route in both directions	
		B	121°05'52"E/38°29'52"N	5.6	304/ 124	91.1		
5	Chenshanjiao—Chanshan waterway	A	122°40' 15"E/37°39' 10"N	13.0	—	0	Main route in both directions	
		B	121°24'53"E/37°52'50"N	5.6	283/ 103	61.2		
		C	121°07' 14"E/37°56'46"N	5.2	286/ 106	14.4		
6	Weihai—Dalian	A	122° 15'30"E/37°34'31"N	3.0	—	0	Feeder route in both directions	
		B	121°47'53"E/38°45'00"N	3.0	343/ 163	73.6		
7	Yantai—Dalian	A	121°30'53"E/37°46' 19"N	3.0	—	0	Feeder route in both directions	
		B	121°46'53"E/38°45'02"N	3.0	12/ 192	60.0		
8	Laotieshan waterway—Yantai	A	121°05'52"E/38°29'52"N	3.0	—	0	Feeder route in both directions	
		B	121°25'27"E/37°46'37"N	3.0	160/340	45.9		
9	Changshan waterway—Laotieshan waterway	A	120°59'58"E/38°01'42"N	1.5	—	0	Feeder route in both directions	
		B	121°01'01"E/38°06'52"N	1.5	9/ 189	5.2		
		C	121°05'52"E/38°29'52"N	1.5	9/ 189	23.3		
		D	121°46'53"E/38°45'02"N	3.0	12/ 192	13.5		
10	Changshan waterway—Dalian	A	121°06'05"E/38°00'42"N	3.0	—	0	Feeder route in both directions	
		B	121°41'00"E/38°24'00"N	3.0	50/230	36.0		
		C	121°46'53"E/38°45'02"N	3.0	12/ 192	21.5		
11	Changshan waterway—Tianjin(North side)	A	120° 19'35"E/38°07'59"N	2.8	—	0	Main route in both directions	Be aware of the offshore oil platforms at 119°03'56"E /38°33'03"N & 118°57' 19"E /38°34'47"N
		B	119°39'48"E/38°21'28"N	2.8	280/ 100	79.8		
		C	119° 12'08"E/38°28'59"N	2.8	289/ 109	23.0		
		D	118°56'47"E/38°33'24"N	2.3	290/ 110	12.8		
		E	118°42'29"E/38°38'36"N	2.3	295/ 115	12.4		
12	Changshan waterway—Tianjin(South side)	A	120° 18'20"E/38°05' 19"N	2.8	—	0	Main route in both directions	Be aware of wrecks at 118°51' 18"E/38°33'06"N
		B	119°36'04"E/38° 16'21"N	2.8	288/ 108	35.1		
		C	119°09'39"E/38°26' 13"N	2.8	295/ 115	23.0		
		D	118°41'02"E/38°36'37"N	2.3	295/ 115	24.7		

13	Changshan waterway—Huanghua(North side)	A	120° 19'35"E/38°07'59"N	2.8	—	0	Feeder route in both directions	
		B	119°39'48"E/38°21'28"N	2.8	293/ 113	34.1		
		C	119° 12'08"E/38°28'59"N	2.8	289/ 109	23.0		
		D	119°06' 17"E/38°30'40"N	2.8/4.3	291/ 111	4.8		
		E	118°45'31"E/38°30'39"N	4.3	270/90	16.5		
14	Changshan waterway—Huanghua(South side)	A	120° 18'20"E/38°05' 19"N	2.8	—	0	Feeder route in both directions	
		B	119°36'04"E/38° 16'21"N	2.8	288/ 108	35.1		
		C	119°09'39"E/38°26' 13"N	2.8	295/ 115	23.0		
		D	118°57'25"E/38°30'40"N	2.8/4.3	295/ 115	10.5		
		E	118°45'31"E/38°30'39"N	4.3	270/90	9.3		
15	Changshan waterway—Caofeidian	A	120° 18'43"E/38°06'51"N	4.4	—	0	Feeder route in both directions	Merged into Laotieshan waterway-Tianjin route from point C
		B	119°00'00"E/38°43'38"N	4.4/3.0	301/ 121	72.0		
		C	118°51'53"E/38°47'25"N	3.0	301/ 121	7.4		
16	Changshan waterway—Jingtang	A	120° 18'46"E/38°06'53"N	2.0	—	0	Feeder route in both directions	
		B	119° 19'34"E/38°54' 17"N	2.0	316/ 136	66.3		
17	Laotieshan waterway—Dongying Recommended route	A	120°45'48"E/38°34'08"N	—	—	0	Recommended route	Be aware of the offshore oil platform at 119°37'01"E /38° 19'39"N
		B	119°44' 13"E/38°26'00"N	—	229/49	80.5		
		C	119°32'52"E/38° 19' 10"N	—	233/53	11.2		
		D	119°26'21"E/38° 17'05"N	—	250/70	5.5		
		E	119°22' 12"E/38° 15'08"N	—	239/59	3.8		
18	Laotieshan waterway—Caofeidian Deep route	A	120°45' 13"E/38°37'47"N	0.54	—	0	Feeder route in both directions	Be aware of wrecks at 119°06'26"E /38°48'26"N
		B	119° 10'00"E/38°48'00"N	0.54	278/98	75.2		
		C	118°45' 12"E/38°48'00"N	0.54	270/90	19.4		
19	Laotieshan waterway—Tianjin	A	120°44'59"E/38°36'41"N	6.0	—	0	Main route in both directions	1. Be aware of wrecks at 119°29'36"E /38°43' 18"N & 119°06'26"E /38°48'26"N 2. Be aware of the offshore oil platform at 118°53'28"E /38°44'35"N
		B	119°00'00"E/38°46'36"N	6.0/4.8	277/97	82.8		
		C	118°45' 12"E/38°48'00"N	4.8	277/97	11.7		
20	Laotieshan waterway—Huanghua	A	120°45'03"E/38°37'09"N	2.5	—	0	Feeder route in both directions	Be aware of the offshore oil platform at 118°53'56"E /38°37'35"N
		B	118°42' 16"E/38°39' 13"N	2.5	271/91	96.2		

21	Laotieshan waterway—Jingtang	A	120°45'25"E/38°38'06"N	3.0	—	0	Feeder route in both directions	Be aware of wrecks at 120°28'51"E /38°43'06"N
		B	119°20' 16"E/39°02'04"N	3.0	290/ 110	70.7		
22	Laotieshan waterway—Qinhuangdao	A	120°49'26"E/38°41'08"N	6.0	—	0	Feeder route in both directions	Be aware of the offshore oil platforms at 120°25'07"E /39° 14'59"N & 120° 19'31"E /39° 10'22"N
		B	120°41'36"E/38°54'30"N	6.0	335/ 155	14.7		
		C	120°01'49"E/39°31'23"N	6.0	320/ 140	48.1		
23	Laotieshan waterway—Xianrendao,Yingkou Deep route	A	120°48'00"E/38°40'37"N	0.54	—	0	Main route in both directions	
		B	120°48'00"E/39°31' 12"N	0.54	0/ 180	50.6		
		C	121° 14'42"E/39°54'36"N	0.54	41/221	31.2		
		D	121°30'00"E/40°04'03"N	0.54	51/231	15.1		
24	Laotieshan waterway—North of Bohai Sea	A	120°51'25"E/38°41'21"N	4.6	—	0	Main route in both directions	
		B	120°51'25"E/38°56'01"N	4.6	0/ 180	14.7		
		C	120°52'31"E/39°04'25"N	4.6/6	5/ 185	8.4		
		D	120°55'53"E/39°30'00"N	6.0	6/ 186	25.7		
		E	121°22'45"E/39°57'49"N	6.0	37/217	34.7		
25	Qinhuangdao—Tianjin	A	119°44'00"E/39°39'45"N	2.5	—	0	Feeder route in both directions	Merged into Laotieshan waterway-Tianjin route from point C
		B	119°44'00"E/39°20'00"N	2.5	180/0	19.8		
		C	119° 17'40"E/38°44'54"N	2.5	210/30	40.6		
26	Qinhuangdao—Laizhou	A	119°44'00"E/39°39'45"N	2.0	—	0	Feeder route in both directions	Be aware of wrecks at 119°54'38"E /38°35'45"N
		B	120°00'00"E/39° 18'00"N	2.0	150/230	25.0		
		C	119°53'05"E/38°03'56"N	2.0	184/4	74.2		
27	North of Baohai Sea—Tianjin	A	121°22'45"E/39°57'49"N	6.0	—	0	Feeder route in both directions	1. Merged into Laotieshan waterway-Tianjin route from point D 2. Be aware of wrecks at 120° 11'47.55"E /39° 15'23.79"N
		B	120°58'48"E/39°33'02"N	6.0/3.0	217/37	30.9		
		C	120°23' 17"E/39°23'35"N	3.0	251/71	29.1		
		D	119° 17'40"E/38°44'54"N	3.0	233/53	64.1		