



# JAPAN P&I NEWS

---

外航組合員各位

## 中国—渤海苗島（Miaodao）諸島の航行制限区域について

Tianjin、Qinhuangdao、Jingtang、Kongkou 等の渤海周辺の港に寄港する船舶が苗島（Miaodao）諸島の航行制限区域を航行し、MSA から調査のため止められる事例が起きています。

このような場合、調査が完了するまで出航することはできず、また違反が確認された場合には罰則の対象となる可能性もあります。

なお、制限区域内には養殖場等があり、当該区域での航行によりこれらを損傷してしまうおそれもあります。

中国のコレスポンデント Oasis P&I Services Company Limited から航行制限区域に関する情報入手しましたので、添付のとおりご参考に供します。

以上

添付資料 : Oasis Circular No. 2311



24 hour duty phone: +86 150 1080 6478

email: [oasis@oasispandi.com](mailto:oasis@oasispandi.com)

[www.oasispandi.com](http://www.oasispandi.com)

Shanghai Dalian Tianjin Beijing Qingdao

Guangzhou Xiamen Ningbo Hongkong

**Date: 06 Nov 2023**

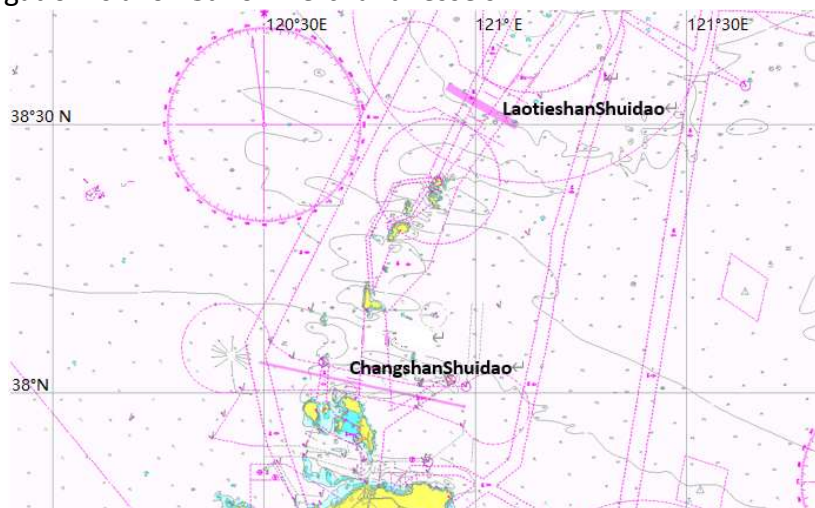
**Oasis Circular No.:2311**

**Subject: Navigation Restricted Areas of Miaodao Archipelago in Bohai Sea of China**

We recently handled some cases where vessels passing through the navigation restricted areas of Miaodao Archipelago were ordered by MSA to stop for investigation when calling at Tianjin, Qinhuangdao, Jingtang, Longkou and other ports around the Bohai Bay.

Miaodao Archipelago in the Bohai sea area is a restricted area where merchant vessels are not allowed to navigate except through the Laotieshan channel and/or the Changshan Channel. The location of aforementioned restricted area is published on the ECDIS and also in navigation warnings and Notice to Mariners. As some merchant vessels may not be aware of such restriction, when calling the ports around the Bohai Bay, they sometimes pass through this area unintentionally to save time and distance.

The sketch of Laotieshan Channel and Changshan Channel is enclosed hereunder, where navigation is allowed for merchant vessels:



Sketch of Laotieshan Channel and Changshan Channel

In such cases, local MSA would usually conduct investigation on the vessel and will not give green light to her departure until the investigation is completed. Meanwhile, owners and the crew members may be subject to penalties in case the violation is confirmed by MSA.

In addition, as there are some fishery farms and fixed fishing nets in this restricted area, civil claims may be lodged by the local fishery farm owners due to damages caused by the vessel.

Foreign vessels are reminded to pay attention to the above navigation restricted area at Miaodao Archipelago in Bohai sea and do not navigate in these areas except through the two nominated channels.

We hope the above is of assistance. If there is any query, please feel free to contact us at [oasis@oasispandi.com](mailto:oasis@oasispandi.com) any time.

Best regards,

**Oasis P&I Services Company Limited**