



JAPAN P&I NEWS

To the Members

Measures to assure safe navigation during the peak season of drift-net fishing in the Seto Inland Sea (Revised)

We refer to the Japan P&I News [No.1220](#) dated 10 April 2023. We have received a revised version of safety measures in the Seto Inland Sea in Japan from Licensed Inland Sea Pilots' Association due to correction of special notes on fishing operation and suspension days.

Vessels entering the port of Hiuchi Nada should arrive at outside of the ports by 17:00 hours during November and December in order to avoid accidents during sunset time.

We attach herewith a free translation of the revised guidance.

Yours faithfully,

The Japan Ship Owners' Mutual Protection & Indemnity Association

Attachment: The guidance for safe navigation issued by the Licensed Inlandsea Pilots' Association [Revised] (free translation)

= Free Translation =

I.S.P. Tech No.23-020

5 October 2023

The Japanese Shipowners' Association
The Japan Foreign Steam Ship Association

Re: Measures to assure safe navigation during the peak season of drift-net fishing
in the Seto Inland Sea (Revised)

Dear Sirs,

In an effort to ensure the safe navigation, we have altered the navigation safety measures as follows.

Vessels entering the port of Hiuchi Nada should arrive at outside of the ports by 17:00 hours during November and December in order to avoid accidents during sunset time.

We thank you for your kind understanding and cooperation.

Sincerely Yours,

Capt. H. Takahama
President of Licensed Inlandsea Pilots' Association

The Safety Measures during the Drift-net Fishing Season in 2023 (Revised)

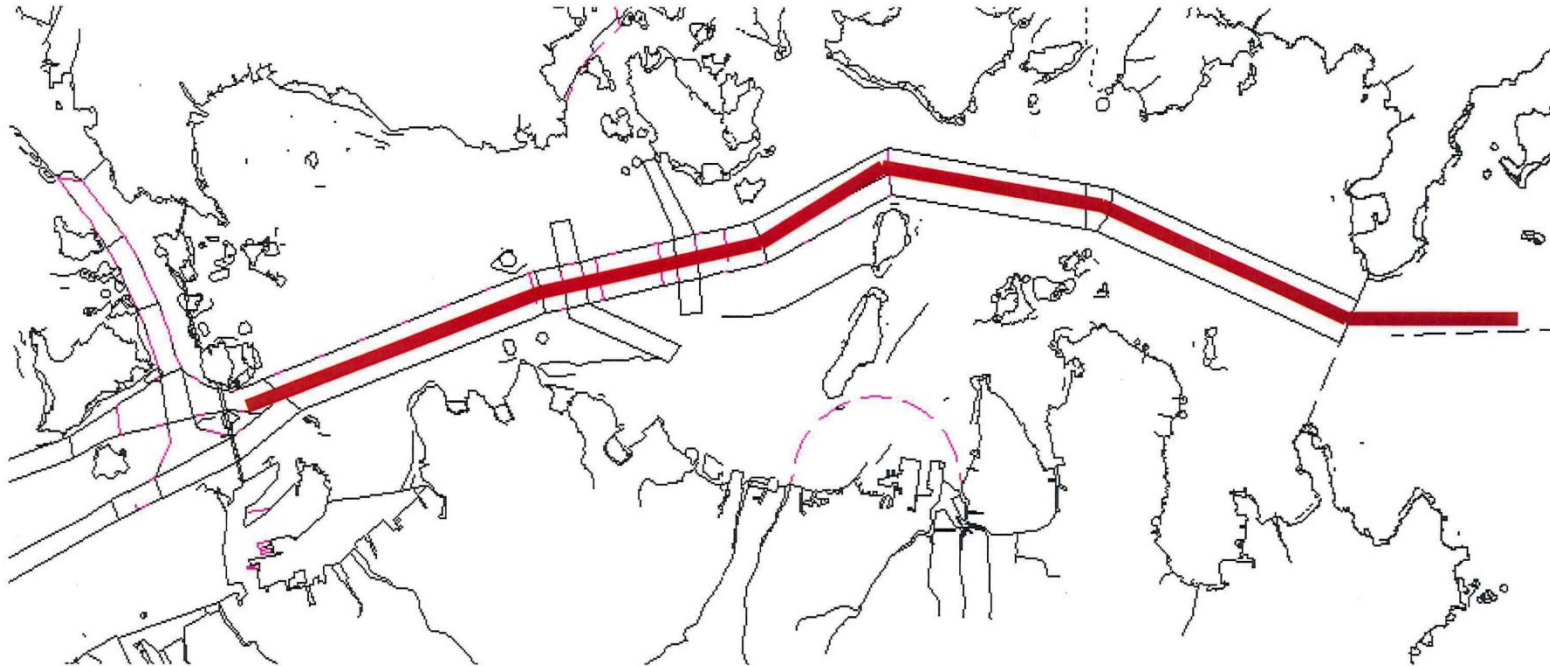
	Area of The Safety Measures	Duration and time of the fishing operation	Suspension of fishing operation	Contents of the Safety Measures
[Harima Nada]	Between Harima Nada Traffic Route No.1 Light Buoy and Mizushima Traffic Route Crossing Position	20 April to 30 November	After Sunset on Tuesdays until Sunrise on Wednesdays After Sunset on Saturdays until Sunrise on Sundays	<p>(1) The vessels navigating with the pilots on board should pass this area by 18:00 hours (17:00 hours in autumn).</p> <p>(2) When the vessels are compelled to navigate this area after 18:00 hours (17:00 hours in autumn), the vessels should arrange escort boats for precaution from 18:00 hours (17:00 hours in autumn) until sunrise on the following day.</p> <p>(4) the season of “autumn” in this safety measures is a period from 1 September to 30 November</p> <p>(5) The area for escort boats to be organised is as per the attachment-1.</p> <p>(Reference) The fishing operation of a catch of Spanish mackerel: 20 April to 20 July 1 October to 30 November</p> <p>The fishing operation of a catch of pomfret: 1 June to 31 October</p>
[Bisan Seto]			※ Suspension on 28 April and 3 May. Operation on 25 April	
[Hiuchi Nada]	<Between the east and the port of Mishima-Kawanoe>	20 April to 30 November (due to the restriction of fishing operation by Kagawa and Okayama)	After Sunset on Saturdays until Sunrise on Sundays	<p>(1) Entering the ports Vessels should pass ES line or No.7 Light Buoy of Bingo Nada after sunrise and arrive at outside of the ports by 18:00 hours. (17:00 hours during November and December)</p> <p>① Vessels should pass ES line 20 minutes after departing Kurushima Strait Traffic Route.</p> <p>② Vessels should pass No.7 Light</p>



[Hiuchi Nada]		Pref.)		<p>Buoy of Bingo Nada 20 minutes after departing Bisan Seto North Traffic Route.</p> <p>a) Vessels expected to reach the outside of the ports after 18:00 hours (17:00 hours during November and December) should pass ES line or No.7 Light Buoy of Bingo Nada after sunrise on the following day by adjusting the pilot boarding time.</p> <p>b) During November and December, the vessels entering the port of Mishima-Kawanoe from the West in the evening should take a roundabout route via No. 2 Light Buoy of Bingo Nada to Nabeiso because of vessels encountering fishing nets even before 18:00 17:00 hours.</p> <p>(2) Departing the ports Vessels departing the ports should do so by 16:00 hours.</p> <p>a) Vessels departing after 16:00 hours should anchor overnight near the quarantine anchorage of the relevant port and start out after sunrise on the following day.</p> <p>b) During November and December, vessels departing the port of Mishima-Kawanoe Westward should take a roundabout route via Nabeiso to No.2 Buoy of Bingo Nada because of vessels encountering fishing nets along the normal route even before 18:00 17:00 hours.</p> <p>(3) "From autumn to winter" means a period from 1 September to 31 December in this Safety Measures.</p>	
	<Between the west and the port of Mishima-Kawanoe>	20 April to 30 November	1 October to 31 December		After Sunset on Saturdays until Sunrise on Sundays
	<Between the east and the port of Niihama>	20 April to 31 December			After Sunset on Saturdays until Sunrise on Sundays
	<Between the west and the port of Niihama>	20 April to 31 August	1 October to 31 December		After Sunset on Saturdays until Sunrise on Sundays
	the port of	1 September to		When entering the port of Mitajiri-	

	Mitajiri-Nakanoseki	31 December	Nakanoseki, arrival outside the port should between 06:00 and 17:00 hours.
--	---------------------	-------------	--

The area for escort boats to be organised for precaution in the night.

夜間「流し網」に対する進路警戒船配備区間



 播磨灘第1号灯浮標～水島航路交差部 

Between No.1 Buoy of the Harima Nada and
Mizushima Traffic Route Crossing Position

進路警戒船の配備が必要となる海域。
休漁日を除く18時(秋季は17時)以降
から日出まで進路警戒船を配備する。

The vessels should organise escort boats for
precaution in this area from 1800LT(1700LT
in autumn) until Sunrise on the following day
excluding on suspension days.