



JAPAN P&I NEWS

To the Members

Measures to assure safe navigation during the peak season of drift-net fishing in the Seto Inland Sea

The drift-net fishing season will start from 20 April 2023 throughout the Seto Inland Sea in Japan. Licensed Inland Sea Pilots' Association intends to implement safety measures in an effort to assure safe navigation. We attach herewith a free translation of “Request for Cooperation” letter from the Pilots' Association.

Yours faithfully,

The Japan Ship Owners' Mutual Protection & Indemnity Association

Attachment: The guidance for safe navigation issued by the Licensed Inland Sea Pilots' Association (free translation)

= Free Translation =

I.S.P. Tech No.23-009(2)

7 April 2023

The Japanese Shipowners' Association
The Japan Foreign Steam Ship Association

Re: Measures to assure safe navigation during the peak season of drift-net fishing
in the Seto Inland Sea (Request for Cooperation)

Dear Sirs,

The season of drift-net fishing starts from 20 April 2023 throughout the Seto Inland Sea. Every year, we have implemented safety measures to assure the safety of vessels under our pilotage and fishing boats alike.

Thanks to the cooperation from parties concerned, there have not been any serious accidents so far. As you may be aware, the drift-nets over 2,000 metres long are used in certain fishing areas. Moreover, in the area from Bisan Seto to Hiuchi Nada, a large number of drift-net fishing boats are in operation, forcing vessels to adjust traffic route not only inside but also outside the navigation route.

In an effort to ensure the safe navigation, we intend to implement the safety measures as attached. There is a possibility that the navigation safety measures may be altered depending on the situation. Regarding any sort of troubles with fisheries officials, pilots cannot respond to requests for submission of any statements. Shipowners are requested to take action based on the Master's statement.

We thank you for your kind understanding and cooperation.

Sincerely Yours,

Capt. H. Takahama
President of Licensed Inlandsea Pilots' Association

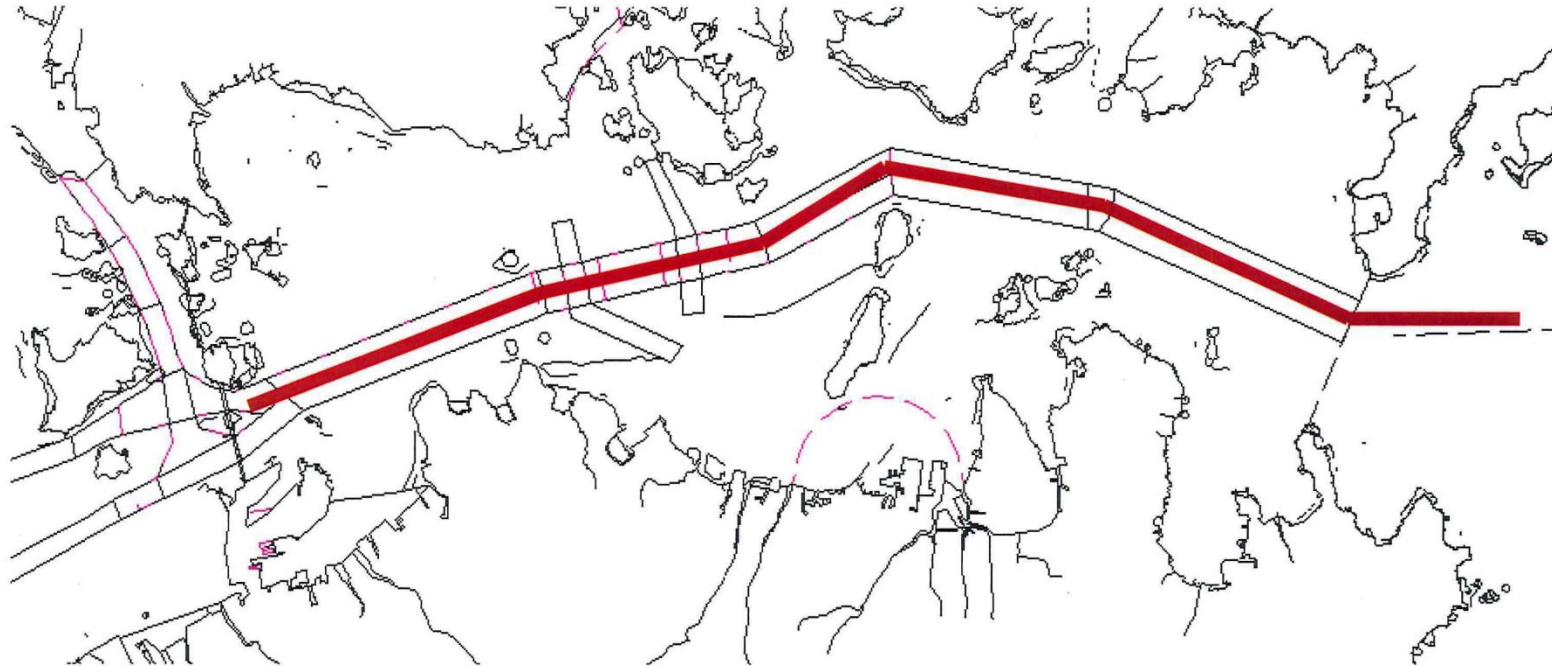
The Safety Measures during the Drift-net Fishing Season in 2023


	Area of The Safety Measures	Duration and time of the fishing operation	Suspension of fishing operation	Contents of the Safety Measures
[Harima Nada]	Between Harima Nada Traffic Route No.1 Light Buoy and Mizushima Traffic Route Crossing Position	20 April to 30 November	After Sunset on Tuesdays until Sunrise on Wednesdays	<p>(1) The vessels navigating with the pilots on board should pass this area by 18:00 hours (17:00 hours in autumn).</p> <p>(2) When the vessels are compelled to navigate this area after 18:00 hours (17:00 hours in autumn), the vessels should arrange escort boats for precaution from 18:00 hours (17:00 hours in autumn) until sunrise on the following day.</p> <p>(4) the season of “autumn” in this safety measures is a period from 1 September to 30 November</p> <p>(5) The area for escort boats to be organised is as per the attachment-1.</p> <p>(Reference) The fishing operation of a catch of Spanish mackerel: 20 April to 20 July 1 October to 30 November</p> <p>The fishing operation of a catch of pomfret: 1 June to 31 October</p>
[Bisan Seto]			After Sunset on Saturdays until Sunrise on Sundays	
[<u>Hiuchi Nada</u>]	<Between the east and the port of Mishima-Kawanoe>	20 April to 30 November (due to the restriction of fishing operation by Kagawa and Okayama	After Sunset on Saturdays until Sunrise on Sundays	<p>(1) Entering the ports Vessels should pass ES line or No.7 Light Buoy of Bingo Nada after sunrise and arrive at outside of the ports by 18:00 hours.</p> <p>① Vessels should pass ES line 20 minutes after departing Kurushima Strait Traffic Route.</p> <p>② Vessels should pass No.7 Light Buoy of Bingo Nada 20 minutes after</p>

<u>[Hiuchi Nada]</u>		Pref.)		departing Bisan Seto North Traffic Route.
	<Between the west and the port of Mishima-Kawanoe>	20 April to 30 November 1 October to 31 December	After Sunset on Saturdays until Sunrise on Sundays	a) Vessels expected to reach the outside of the ports after 18:00 hours should pass ES line or No.7 Light Buoy of Bingo Nada after sunrise on the following day by adjusting the pilot boarding time. b) During the period from Autumn to Winter, the vessels entering the port of Mishima-Kawanoe from the West in the evening should take a roundabout route via No. 2 Light Buoy of Bingo Nada to Nabeiso because of vessels encountering fishing nets even before 18:00 hours.
	<Between the east and the port of Niihama>	20 April to 31 December	After Sunset on Saturdays until Sunrise on Sundays	(2) Departing the ports Vessels departing the ports should do so by 16:00 hours. a) Vessels departing after 16:00 hours should anchor overnight near the quarantine anchorage of the relevant port and start out after sunrise on the following day. b) From autumn to winter, vessels departing the port of Mishima-Kawanoe Westward should take a roundabout route via Nabeiso to No.2 Buoy of Bingo Nada because of vessels encountering fishing nets along the normal route even before 18:00 hours.
	<Between the west and the port of Niihama>	20 April to 31 August 1 October to 31 December	After Sunset on Saturdays until Sunrise on Sundays	(3) “From autumn to winter ” means a period from 1 September to 31 December in this Safety Measures.
	the port of Mitajiri-Nakanoseki	1 September to 31 December		When entering the port of Mitajiri-Nakanoseki, arrival outside the port should between 06:00 and 17:00 hours.

The area for escort boats to be organised for precaution in the night.

夜間「流し網」に対する進路警戒船配備区間



 播磨灘第1号灯浮標～水島航路交差部

Between No.1 Buoy of the Harima Nada and Mizushima Traffic Route Crossing Position

進路警戒船の配備が必要となる海域。休漁日を除く18時(秋季は17時)以降から日出まで進路警戒船を配備する。

The vessels should organise escort boats for precaution in this area from 1800LT(1700LT in autumn) until Sunrise on the following day excluding on suspension days.