

JAPAN P&I NEWS

外航組合員各位

台湾—航行注意 中国による軍事演習 (2022年8月4日～8月7日)

台湾の現地コレスポンデント Taiwan Maritime Services Limited から、台湾周辺海域周辺での中国による8月4日正午から8月7日正午までの軍事演習期間中の航行注意について情報を入手しましたので、下記のとおりご案内します。

当該海域を航行する船舶は、通達をご参照のうえ細心の注意を払い、不測の事故回避の対策を実施されることをお勧めいたします。

記

試 訳

台湾当局は、中国による台湾周辺海域での軍事演習の決定に対応し航路情報を発しました。演習区域は、基隆、蘇澳鎮、台北、高雄、安平、花蓮を含む台湾の主要商業港湾に近接しているため、航行と安全に大きな影響があるとしています。当局は、全ての船舶に対してこれらの海域を臨時に回避する航路をとるよう勧告しています。期間は、軍事演習が実施される3日間、8月4日正午から8月7日正午です。警戒区域は、以下を参考にしてください。

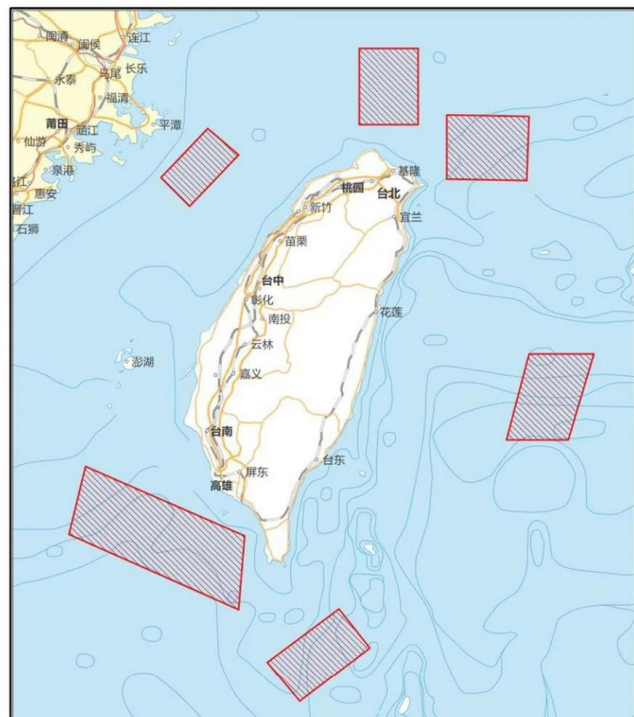
1. East of Taiwan

- A. N22-56/E122-40
- B. N23-38/E122-51
- C. N23-38/E123-23
- D. N22-56/E123-09
- E. N23-40/E122-30
- F. N23-40/E122-54
- G. N23-13/E122-54
- H. N23-13/E122-30

2. North of Taiwan

Zone 1:

- A. N25-15-26/E120-29-20
- B. N24-50-30/E120-05-45
- C. N25-04-32/E119-51-22
- D. N25-28-12/E120-14-30



Zone 2:

E. N26-07/E121-57

F. N25-30/E121-57

G. N25-30/E121-28

H. N26-07/E121-28

Zone 3:

I. N25-34/E122-50

J. N23-03/E122-50

K. N25-03/E122-11

L. N25-34/E122-11

3. South of Taiwan

Zone 1:

M. N21-14/E121-33

N. N21-33/E121-18

O. N21-07/E120-43

P. N20-48/E120-59

Zone 2:

Q. N22-43/E119-14

R. N22-10/E119-06

S. N21-33/E120-29

T. N22-09/E120-32

以上

添付資料 : Maritime and Port Bureau, MOTC_22-250_253_255



Notice to Mariners,
Maritime and Port Bureau, MOTC

August 3, 2022

256

Response measures for the military exercise by People's Republic of China (PRC) in the waters around Taiwan (Southern Taiwan)

Source : In accordance with the information released by the Xinhua News Agency and other media on August 2, 2022.

Details : Regarding the important military exercises conducted by PRC from 1200 on August 4 to 1200 on August 7, 2022, vessels are urged to avoid the areas where the exercises are being held. Vessels should enter and exit the Port of Kaohsiung and the Port of Anping by using alternate routes, and should pay attention to navigation safety.

Area1 coordinates:

A	21° 14' 00" N	121° 33' 00" E
B	21° 33' 00" N	121° 18' 00" E
C	21° 07' 00" N	120° 43' 00" E
D	20° 48' 00" N	120° 59' 00" E

Area 2 coordinates

E	22° 43' 00" N	119° 14' 00" E
F	22° 10' 00" N	119° 06' 00" E
G	21° 33' 00" N	120° 29' 00" E
H	22° 09' 00" N	120° 32' 00" E

Location :

21°14'00.0" N,	121°33'00.0" E
21°33'00.0" N,	121°18'00.0" E
21°07'00.0" N,	120°43'00.0" E
20°48'00.0" N,	120°59'00.0" E
22°43'00.0" N,	119°14'00.0" E
22°10'00.0" N,	119°06'00.0" E
21°33'00.0" N,	120°29'00.0" E
22°09'00.0" N,	120°32'00.0" E *WGS84

Maritime and Port Bureau, MOTC
Director-General Yeh Hsieh-Lung



Notice to Mariners,
Maritime and Port Bureau, MOTC

August 3, 2022

257 Response Measures to the Military Exercises Announced by People's Republic of China (PRC) in the Waters Around Taiwan (Northern Taiwan)

Source: In accordance with the information released by the Xinhua News Agency and other media on August 2, 2022.

Details:

1. Regarding the important military exercises conducted by PRC from 12:00 on August 4 to 12:00 on August 7, 2022, vessels are urged to avoid the areas where the exercises are being held. Vessels should enter and exit the Port of Keelung, the Port of Su'ao, and the Port of Taipei by using alternate routes, and should pay attention to navigation safety.
2. Vessels sailing between the waters west of Area 1 and Pingtan should endeavor to avoid the area where the exercises are being conducted and the surrounding waters in order to ensure navigation safety.

Area 1 coordinates:

A 25°15'26"N, 120°29'20"E

B 24°50'30"N, 120°05'45"E

C 25°04'32"N, 119°51'22"E

D 25°28'12"N, 120°14'30"E

Area 2 coordinates:

E 26°07'00"N, 121°57'00"E

F 25°30'00"N, 121°57'00"E

G 25°30'00"N, 121°28'00"E

H 26°07'00"N, 121°28'00"E

Area 3 coordinates:

I 25°34'00"N, 122°50'00"E

J 25°03'00"N, 122°50'00"E
K 25°03'00"N, 122°11'00"E
L 25°34'00" N, 122°11'00"E

Location

25°15'26.0"N, 120°29'20.0"E
24°50'30.0"N, 120°05'45.0"E
25°04'32.0"N, 119°51'22.0"E
25°28'12.0"N, 120°14'30.0"E
26°07'00.0"N, 121°57'00.0"E
25°30'00.0"N, 121°57'00.0"E
25°30'00.0"N, 121°28'00.0"E
26°07'00.0"N, 121°28'00.0"E
25°34'00.0"N, 122°50'00.0"E
25°03'00.0"N, 122°50'00.0"E
25°03'00.0"N, 122°11'00.0"E
25°34'00.0"N, 122°11'00.0"E *WGS 84

Maritime and Port Bureau, MOTC
Director-General Yeh Hsieh-Lung



Notice to Mariners,
Maritime and Port Bureau, MOTC

August 3, 2022

259 Response Measures to the Military Exercises Announced by People's Republic of China in the Waters Around Taiwan (Eastern Taiwan)

Source : In accordance with the information released by the Xinhua News Agency and other media on August 2, 2022.

Details : Regarding the important military exercises conducted by PRC from 1200 on August 4 to 1200 on August 7, 2022, vessels are urged to avoid the areas where the exercises are being held. Vessels should enter and exit the Port of Hualien and the Port of Hoping by using alternate routes, and should pay attention to navigation safety.

Eastern waters location coordinate :

A	22°56'00" N	122°40'00" E	
B	23°38'00" N	122°51'00" E	
C	23°38'00" N	123°23'00" E	
D	22°56'00" N	123°09'00" E	(Four Point connection)

Location coordinate :

22°56'00.0" N	122°40'00.0" E	
23°38'00.0" N	122°51'00.0" E	
23°38'00.0" N	123°23'00.0" E	
22°56'00.0" N	123°09'00.0" E	(WGS 84 Datum)

Maritime and Port Bureau, MOTC
Director-General Yeh Hsieh-Lung