



JAPAN P&I NEWS

外航組合員各位

中国—渤海湾（Bohai Bay）南部、廟島群島（Miaodao Archipelago）周辺の航行規制に注意

中国のコレスポンデント Huatai Insurance Agency & Consultant Service Ltd. (Huatai) より煙台 (Yantai) MSA 発の情報を入手しましたのでご案内します。

廟島群島周辺の航行制限区域において、中国国外の船舶が誤って侵入する事故が頻発しています。直近の3年間で毎年10件程度発生していて、煙台MSAは注意喚起をおこなっています。渤海湾を出入航する中国国内および国外の商船は、長山水道（Changshan channel）および老鉄山水道（Lao Tieshan channel）を除いて、廟島群島周辺を航行することができません。

添付の Huatai 青島事務所作成のサーキュラーには長山水道と老鉄山水道の詳細が紹介されています。この情報に追加して、情報が必要な場合は、Huatai 青島事務所へ直接ご連絡ください。

<Huatai 青島事務所連絡先>

Email: qingdao@huatai-serv.com

Tel: 86 532 8502 1883

Duty Mobile: 86 186 5328 9883

本船のご安航をお祈りいたします。

以上

添付資料：Huatai Insurance Agency & Consultant Service Ltd. Circular (PNI1905)



CHINA RE

华泰保险经纪有限公司

HUATAI INSURANCE AGENCY & CONSULTANT SERVICE LTD.

Circular Ref No.: PNI 1905

Date: 02 July, 2019

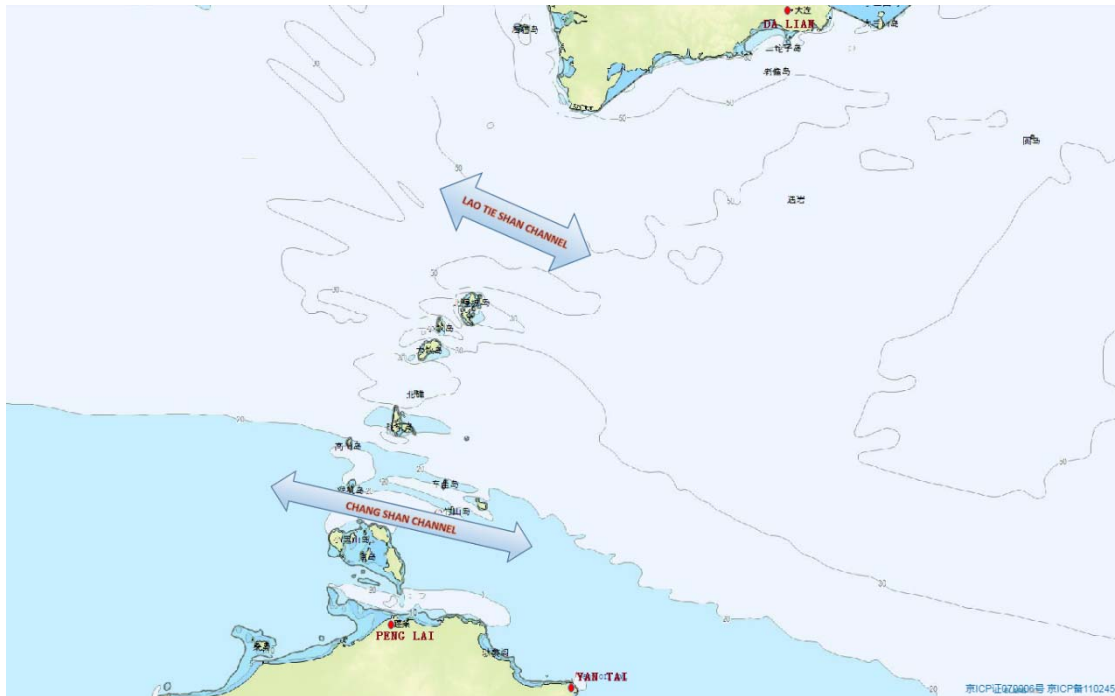
Dear Sirs or Madam,

Subject: Reminders of the navigational area around Miaodao Archipelago for vessels entering into or sailing from Bohai Bay

As per information from Yantai MSA, foreign vessels often wrongfully pass through the navigation-restricted areas around Miaodao Archipelago nowadays. As advised, around ten cases happened annually in the recent three years. According to Law of the People's Republic of China on Maritime Traffic Safety and other relevant regulations, domestic/foreign commercial vessels are not allowed to sail in any channel in the Miaodao Archipelago except for Changshan Channel and Laotieshan channel. The aforementioned navigation-restricted areas have been published on the ECDIS, navigation warnings and Notice to mariners. However, accident of vessels passing through the navigation-restricted areas happens from time to time since sailing vessels, especially foreign vessels, were not familiar with/ aware of the restriction on navigation.

Although it might reduce sailing time and distance for vessels sailing in such navigation-restricted areas around Miaodao Archipelago, there are submerged reefs and fishery farms wherein which may result in vessels' grounding and/or damaging the fishery farms. This office has handled several fishery farm claims in this area. On the other hand, vessels passing through the navigation-restricted areas will face the local MSA's maritime investigation onboard and potential administrative penalty in terms of relevant regulation. This may lead to time and economic loss to ship owners.

As such, we would like to draw your special attention that only Changshan Channel and Laotieshan channel are navigational areas for vessels entering into or sailing from Bohai Bay. Other sea area is prevented from commercial vessels sailing. Please kindly refer to details of the aforementioned two channels as follows:



Bohai Straits

1. LaoTieshan Channel

a. Traffic Separation Zone:

The Separation Zone, which is 9 nm long and 1 nm wide, is centered on the following geographic lines:

38-34.300N 120-55.900E

38-29.800N 121-05.900E

b. The boundaries of the separation zone:

i. The north boundary of the separation zone is the line between the following two geographical points:

38-36.700N 120-57.600E

38-32.200N 121-07.600E

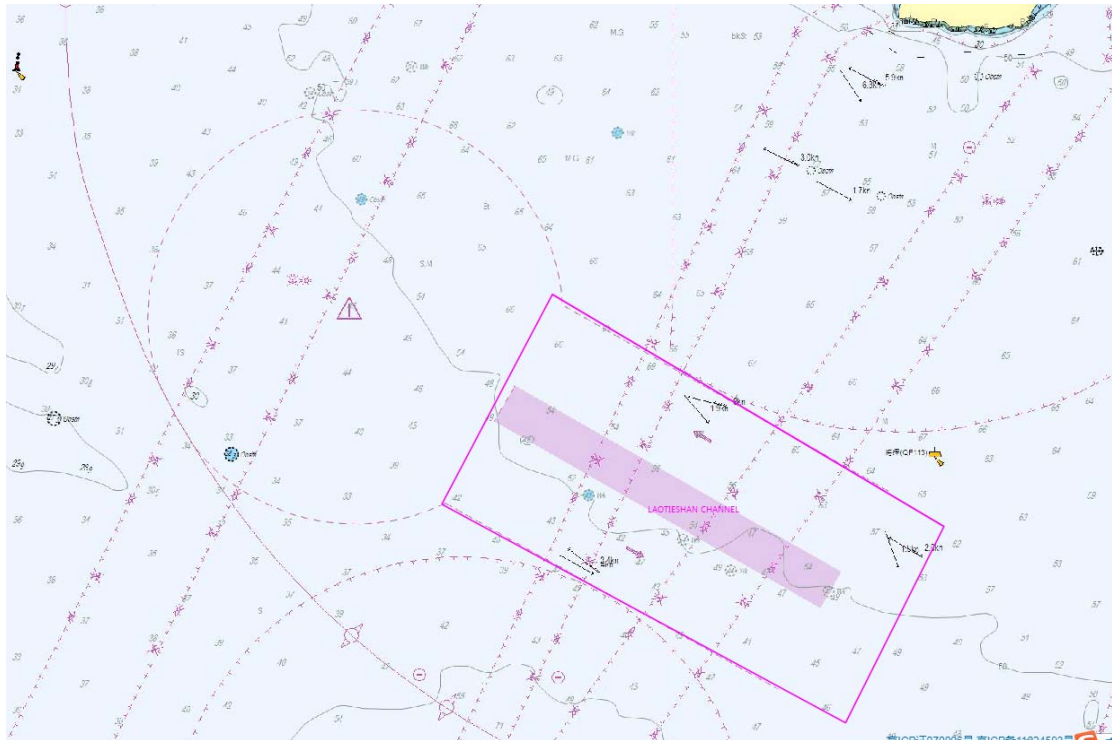
ii. The south boundary of the separation zone is the line between the following geographical points:

38-31.900N 120-54.100E;

38-27.500N 121-04.100E

c. Precautionary Area:

The Precautionary Area is the water within the arc as drew with radius of 5 nautical miles around the center of 38-36.400N 120-51.300E



LaoTieshan Channel

2. Changshan Channel:

a. Traffic Separation Zone:

The separation zone, which is 23.5 nm long and 0.2 nm wide, is centered on the following geographic line:

38-03.417N 120-29.300E
37-58.450N 120-58.400E

b. The boundaries of the separation zone:

i. The north boundary of the separation zone was the line as connected by following four geographical points:

38-00.700N 120-58.600E
38-00.700N 120-52.200E
38-03.867N 120-34.000E
38-05.600N 120-30.833E

ii. The south boundary of the separation zone was the line as connected by following four geographical points:

37-56.200N 120-58.200E
37-58.267N 120-51.700E
38-00.300N 120-40.000E
38-00.300N 120-27.000E

c. Precautionary Area:

The East Precautionary Area: the water within the arc as drew with radius of 4 nautical miles around the center of 37-58.250N 121-02.500E

The West Precautionary Area: the water within the arc as drew with radius of 4 nautical miles around the center of 38-05.000N 120-24.600E



Changshan Channel

This circular is prepared by Huatai Qingdao office. You may also contact our Qingdao office directly at the following details in case of any further query:

Email: qingdao@huatai-serv.com
Tel: 86 532 8502 1883
Duty Mobile: 86 186 5328 9883

Best regards,

于利民

Yu Limin
President