



JAPAN P&I NEWS

外航組合員各位

中国福建省寧徳（Ningde）海域一定置網の損傷事故多発に伴う注意喚起

中国のコレスポンデント Huatai Insurance Agency & Consultant Service Ltd.より中国寧徳(Ningde)海域での定置網損傷事故に関する情報を添付のとおり入手しましたのでご案内します。

寧徳（Ningde）海域では外航船舶が定置網に侵入する事故が頻発しており、最近では15日間で4件の漁網損傷事故が発生しているとのことです。当該海域を航行する船舶は、安全航行対策を実施いただくとともに十分ご注意ください。

本船のご安航をお祈りいたします。

以上

添付資料：Huatai Insurance Agency & Consultant Service Ltd. Circular (PNI1903)



CHINA RE

华泰保险经纪有限公司

HUATAI INSURANCE AGENCY & CONSULTANT SERVICE LTD.

Circular Ref No.: PNI1903

Date: 19 February 2019

Dear Sir/Madam,

Subject: Precautions against Contacting Fishing Net in Ningde Waters, China.

1. Background

In the past 15 days, four similar incidents on contacting with fishing nets (Set-net Type, 定置网) occurred in the Ningde waters where the foreign ship always choose to drop anchor to wait for berth of Ningde Port or Kement Port of Fujian Province. Two of the incidents were handled by our Xiamen office while the other two were not. These incidents caused the ship's propeller twined by the fishing net, some fishermen attended onboard irrationally and rejected to disembark before settlement.

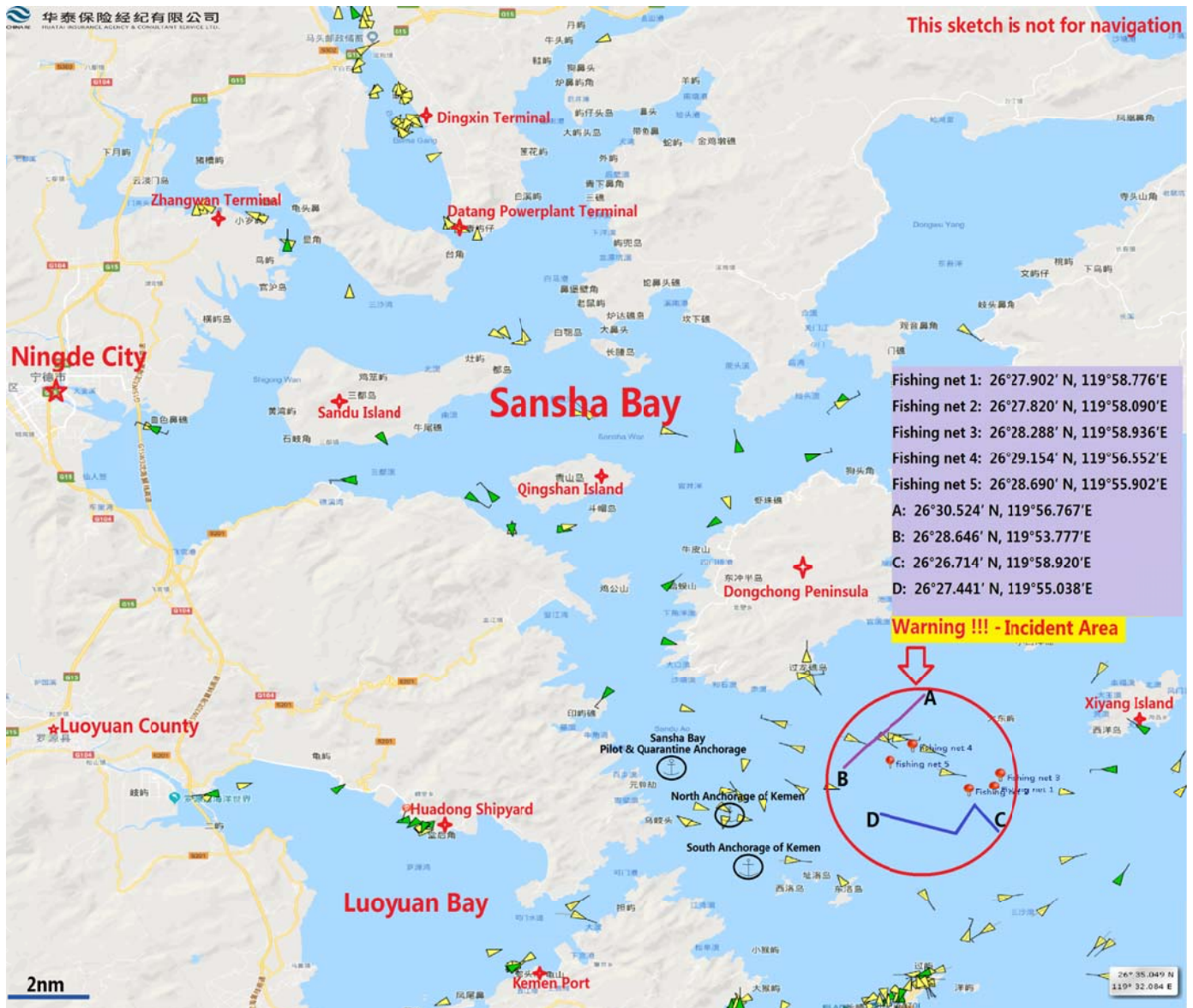
As per our local resource, the above waters are not the regulated anchorage for the ship and it's not marked in the sea chart. But due to the local anchorage is small or occupied by the small ships, the big/foreign ship always has to choose to drop anchor at this area.

It's unusual that several similar incidents occurred in a short period consecutively and these incidents also give rise to the local port authorities' attention.

2. Position of incident area

Basing on our collected information, we made a sketch to show the

position of the incident area including the position of 5 fishing nets in the two cases we handled and the navigation trace (A to B and C to D) of the two ships involved in the other two incidents.



3. Our suggestion

- Choosing a proper position to drop anchor where is away from this fishing net area.
- If there is no other choice, enter this area in the daytime with high care rather than in the night time.
- Enhancing lookout, especially in the mid-night, warn every fishing boats which try to approach the ship.

- d. In case the incident is occurred, fishermen's attending onboard shall be prohibited.
- e. Seeking more information from the local ship agent when it's necessary.

4. Emergency call

Any emergencies at the sea, the ship may contact the MSA via the Emergency Call: +86 12395.

This circular is prepared by Huatai Xiamen Office, you may also contact our Xiamen office directly at the following details in case of any further query:

Attn: Ms. Lina Gao/Ms. Tracy Zheng/Mr. Dongyao Huang

Tel: 86 592 2123223

Fax: 86 592 2681235

Email: pni.xm@huatai-serv.com

Duty Mobile: 86 150 6077 2037

Hope the above is of assistance.

Sincerely yours

Best regards,



Yu Limin

President