

Our club's original poster

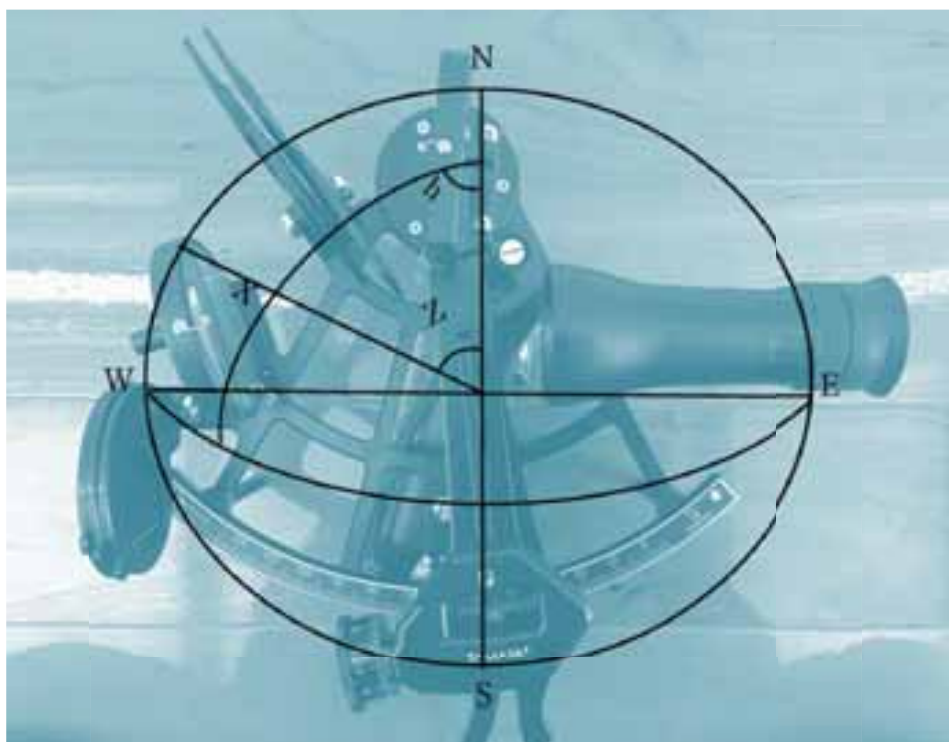


Be aware of Cyber Risk



Remember Celestial Navigation?

In case of GPS (Global Positioning System) failure under navigation with ECDIS, are you able to navigate by Celestial Navigation?



Over reliance on ECDIS should be avoided particularly if detrimental to the keeping of a proper look-out



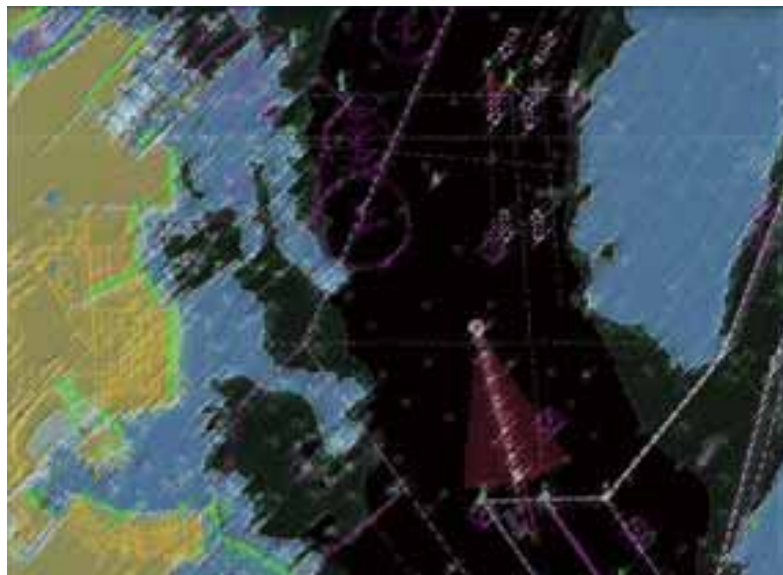
Be aware of Cyber Risk



Is your GPS position data of ECDIS truly correct?

All deck officers should be aware of importance of that;

- there's a possibility that GPS data does not tell the correct position due to jamming devices.
- periodical check of cross track (XT) by visual, radar and radar overlay on ECDIS.
- re-check your Bridge Procedure.



ICS Bridge Procedure Guide say; ECDIS is an aid to safe navigation. ECDIS does not conduct safe navigation or relieve the Master or OOW of their responsibilities for conducting safe navigation.

To be posted on Bridge



JAPAN P&I CLUB



Be aware of Cyber Risk



Crew is not a System Integrator, is it?

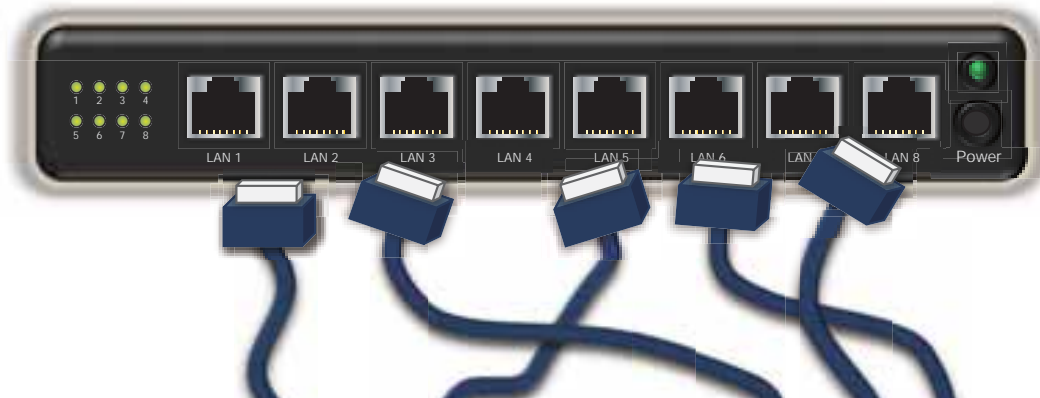
Exchanging of LAN cables by onboard crew without owner's permission, caused **malfunction** of onboard computer based systems.

malfunction

IACS UR E22(Rev.1) specifies requirements related to composition and function of computer based systems used for machinery systems such as monitoring systems.

3.3.2 Change management

The owner shall ensure that necessary procedures for software and hardware change management exist on board, and that any software modification/upgrade are performed according to the procedure. All changes to computer based systems in the operational phase shall be recorded and be traceable.



All crew and visitors onboard shall strictly follow the system security procedure.

Be aware of **Cyber Risk**



Do **(U)**you **(S)**can and **(B)**lock
your ship's PC ?

U Used only by authorised persons, in conjunction with the periodical update of anti-virus software.

S Scan devices is to be activated whenever a USB is used.

B Block ship's PC access at port and consider the risks involved when using a USB.

- It is a common root cause of infection of virus ship's PCs by USB connection.
- All crew members should be fully aware of the risk.

To be posted on Public space, Bridge, Officers Office, Engine Control Room



The author

Takehiko Hino / Manager

Loss Prevention and Ship Inspection Dept.

The Japan Ship Owners Mutual Protection & Indemnity Association



JAPAN P&I CLUB
日本船主責任相互保険組合

Website <http://www.piclub.or.jp>

Principal Office (Tokyo) 2-15-14, Nihonbashi-Ningyocho Chuoh-ku, Tokyo 103-0013, Japan

Tel : 03-3662-7229 Fax : 03-3662-7107

Kobe Branch 6th Floor Shosen-Mitsui Bldg. 5, Kaigandori Chuoh-ku, Kobe, Hyogo 650-0024, Japan

Tel : 078-321-6886 Fax : 078-332-6519

Fukuoka Branch 6th Floor Meiji-Dori Business Center 1-1, Shimokawabata-machi, Hakata-ku, Fukuoka 812-0027, Japan

Tel : 092-272-1215 Fax : 092-281-3317

Imabari Branch 2-2-1, Kitahorai-cho, Imabari, Ehime 794-0028, Japan

Tel : 0898-33-1117 Fax : 0898-33-1251

Singapore Branch 80 Robinson Road #14-01B SINGAPORE 068898

Tel : 65-6224-6451 Fax : 65-6224-1476

Japan P&I Club (UK) Services Ltd 5th Floor, 38 Lombard Street, London EC3V 9BS U.K.

Tel : 44-20-7929-3633 Fax : 44-20-7929-7557