

JAPAN P&I NEWS

No.936-17/12/25

To the Members

Dear Sirs,

Recommended Route & Virtual AIS in westward of O Shima, Japan

We have obtained information from Japan Coast Guard, on which recommended route is set in westward of O Shima, Japan on 1st January 2018. The north and south ends of this route are shown by the virtual AIS. Please find attached No.46 Notice to Mariners (excerpt) and a reference Nautical Chart made by us.

Yours faithfully,

The Japan Ship Owners' Mutual Protection & Indemnity Association

Loss Prevention and Ship Inspection Department

Tel: +81 3 3662 7229

Fax: +81 3 3662 7107

E-mail: lossprevention-dpt@piclub.or.jp

Website: <https://www.piclub.or.jp>

Attachment 1: No.46 Notice to Mariners (excerpt)

Attachment 2: Reference Nautical Chart made by us

No. 46



Weekly edition.
17 November 2017

NOTICES TO MARINERS

Japan Coast Guard

(Pars. C : 726 to 741, T & P : 5630 to 5640)

GEOGRAPHICAL INDEX	P. 2
NOTICE FOR SMALL CORRECTION TO CHART	P. 3
TEMPORARY AND PRELIMINARY NOTICE	P. 8
NAVIGATIONAL WARNING IN FORCE	P. 16
INFORMATION ABOUT CHARTS & PUBLICATIONS	P. 17
OTHER INFORMATION	P. 18

Mariners are requested to inform the Japan Hydrographic and Oceanographic Department (JHOD), 3-1-1, Kasumigaseki, Chiyoda-Ku, Tokyo, 100-8932, immediately of the discovery of new dangers, or changes or defects in aids to navigation and of shortcomings in Japanese charts or publications.

In addition to postal methods, the following additional communication facilities are available:

Fax : +81 (0) 3-3595-3571

Phone : +81 (0) 3-3595-3647

E-mail : jcg-tuho@navarea11.go.jp

Notices to Mariners Website: http://www1.kaiho.mlit.go.jp/TUHO/tuho/nm_en.html

Navigational Warnings Website: http://www1.kaiho.mlit.go.jp/TUHO/keiho/navarea11_en.html

Chart Updates, Temporary and Preliminary NMs of this issue have the same contents that the equivalent ENC updates on the same date have.

Printed copies of the Notices to Mariners and chartlets(blocks) on the JHOD Website may be used as an equivalent to the paper version of the Notices to Mariners and chartlets (blocks).

It should be noted that the chartlets (blocks) printed from the website, may not have the same quality and accuracy as the paper version, depending on the quality and condition of the printer and ink used.

The Japan Coast Guard (JCG) does not accept any responsibility whatsoever for the accuracy and/or reliability of the information as displayed or printed by the user's equipment.

*Notices to Mariners Office,
Hydrographic and Oceanographic Department,
Japan Coast Guard*

3. Obligation to listen to information in case of emergency disaster

Vessels should listen to information related to emergency disasters or similar matters provided by Tokyo MARTIS.

(1) Subject vessels

Vessels of 50 meters in length or more

(2) In case of emergency disaster, Sea areas where vessels should listen to information provided

A designated sea area and all ports area of Tateyama Ko, Kisarazu Ko, Chiba Ko, Keihin Ko and Yokosuka Ko.

(3) Restrictions or orders

In order to prevent danger to maritime traffic, restrictions or orders may be enacted.

4. Details of all the above areas are shown on the attached sheet (Page 15).

Remarks:--(1) Details should be inquired to Navigation Safety Division, Maritime Traffic Department, 3rd Regional Coast Guard Headquarters.

Phone: 045-211-1118 (operator)

(2) The chart correction on charts W90 and JP90 will be made by New Edition of Chart to be published 15 December 2017, on charts W66, JP66, W67, JP67, W91, JP91, W1083, JP1083, W1085, JP1085, W1065, JP1065, W1067, JP1067, W1086, JP1086, W1087, JP1087, W1088, JP1088, W55, W1081, JP1081, W1061, JP1061, W1062, JP1062 and JP5510 will be made by New Edition of Chart to be published 09 February 2018.

(3) The information about new traffic rules shown on W90 and JP90 (to be published 15 December 2017) incorporates the changes scheduled for implementation on 31 January 2018.

The previous edition of these chart should continue to be used until 30 January 2018.

The previous edition of W90 and JP90 (dated 01 July 2010) are to be given an 'X' prefix.

'XW90' and 'XJP90' will be cancelled 31 January 2018.

Charts temporarily affected.--W66(INT 5301)--JP66--W67--JP67--W91--JP91--W1083--JP1083--
W1085--JP1085--W1065(INT 5305)--JP1065--W1067--JP1067--W1086--
JP1086--W1087--JP1087--W1088--JP1088--W55--W1081(INT 5306)--
JP1081--W1061(INT 5303)--JP1061--W1062(INT 5304)--JP1062--
W90(INT 5302)--JP90--JP5510.

(Government Ordinance Nos. 265, 266 of 2017 & Ministry of Land, Infrastructure, Transport and Tourism Ordinance No. 64 of 2017.)

* 5634(P)/17. NANPO SHOTO--O Shima, Westward--Recommended Route implemented & Virtual AIS aid to navigations established.

Recommended Route will be implemented at 0900 JST (UTC+9 hours) 01 January 2018 as follows.

(Central line of Recommended Route)

Area on line joining two positions (1) 34-48-00N 139-17-00E
(2) 34-42-12N 139-10-00E

(Virtual AIS aid to navigations established)

Offing Izu O Shima West Coast Recommended Route Northward Virtual AIS aid to navigation (Safe water marks)

Position (3) position (1) above

Offing Izu O Shima West Coast Recommended Route Southward Virtual AIS aid to navigation (Safe water marks)

Position (4) position (2) above

Remarks:--(1) Vessels are requested to keep the starboard side of the recommended route shown by a central line.

(2) The notice for chart correction will be issued N.M. No. 1 of 2018 (dated 05 January 2018).

Charts temporarily affected.--W1066--W1078--W51--W80--JP80--W61B(INT 5202)--W81(INT 5203). (IMO. SN. 1/Circ. 335 & Maritime Traffic Department.)

* 5635(T)/17. Osaka Wan--Hannan Ko, Kishiwada Passage & Section 1--Dumping Works.

Period 17 November 2017 to 16 February 2018

Area bounded by line joining six positions

- (1) 34-29-50.0N 135-22-05.7E
- (2) 34-29-34.3N 135-22-01.0E
- (3) 34-29-35.2N 135-21-56.2E
- (4) 34-29-16.3N 135-21-50.6E
- (5) 34-29-24.2N 135-21-12.5E
- (6) 34-29-58.9N 135-21-22.8E

Charts temporarily affected.--W1141--JP1141--W1103(INT 5317)--JP1103. (5th R. N.M. No. 43/985 of 2017.)

* 5636(T)/17. Hanshin Ko, Sakai-Senboku Ku, Section 6--Dredging Works.

Period 17 November 2017 to 16 February 2018

Area bounded by line joining eight positions

- (1) 34-33-11.1N 135-22-56.5E
- (2) 34-33-10.4N 135-22-55.2E
- (3) 34-33-10.1N 135-22-55.4E
- (4) 34-33-07.7N 135-22-51.2E
- (5) 34-33-08.9N 135-22-49.9E
- (6) 34-33-16.4N 135-22-29.4E
- (7) 34-33-18.0N 135-22-29.8E
- (8) 34-33-18.0N 135-22-50.2E

Charts temporarily affected.--W1110--JP1110--W1103(INT 5317)--JP1103. (5th R. N.M. No. 43/987 of 2017.)

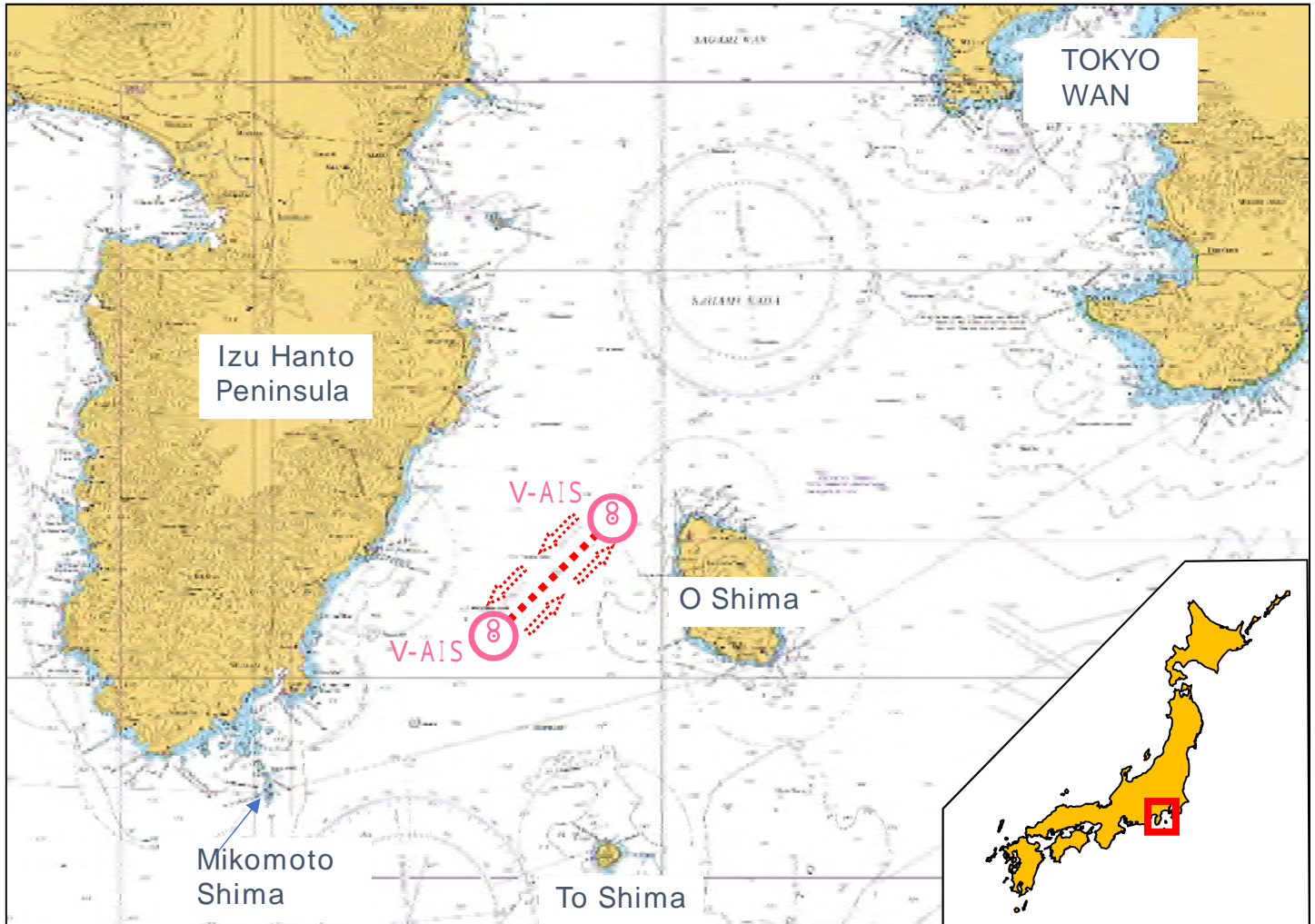
* 5637(T)/17. SETO NAIKAI--Mihara Seto--Sagi Ko, Approach & Aogi Seto--Shoals existent.

Position depth about 0.9m (1) 34-21-11.3N 133-07-54.9E

Position depth about 8.3m (2) 34-20-24.0N 133-03-58.3E

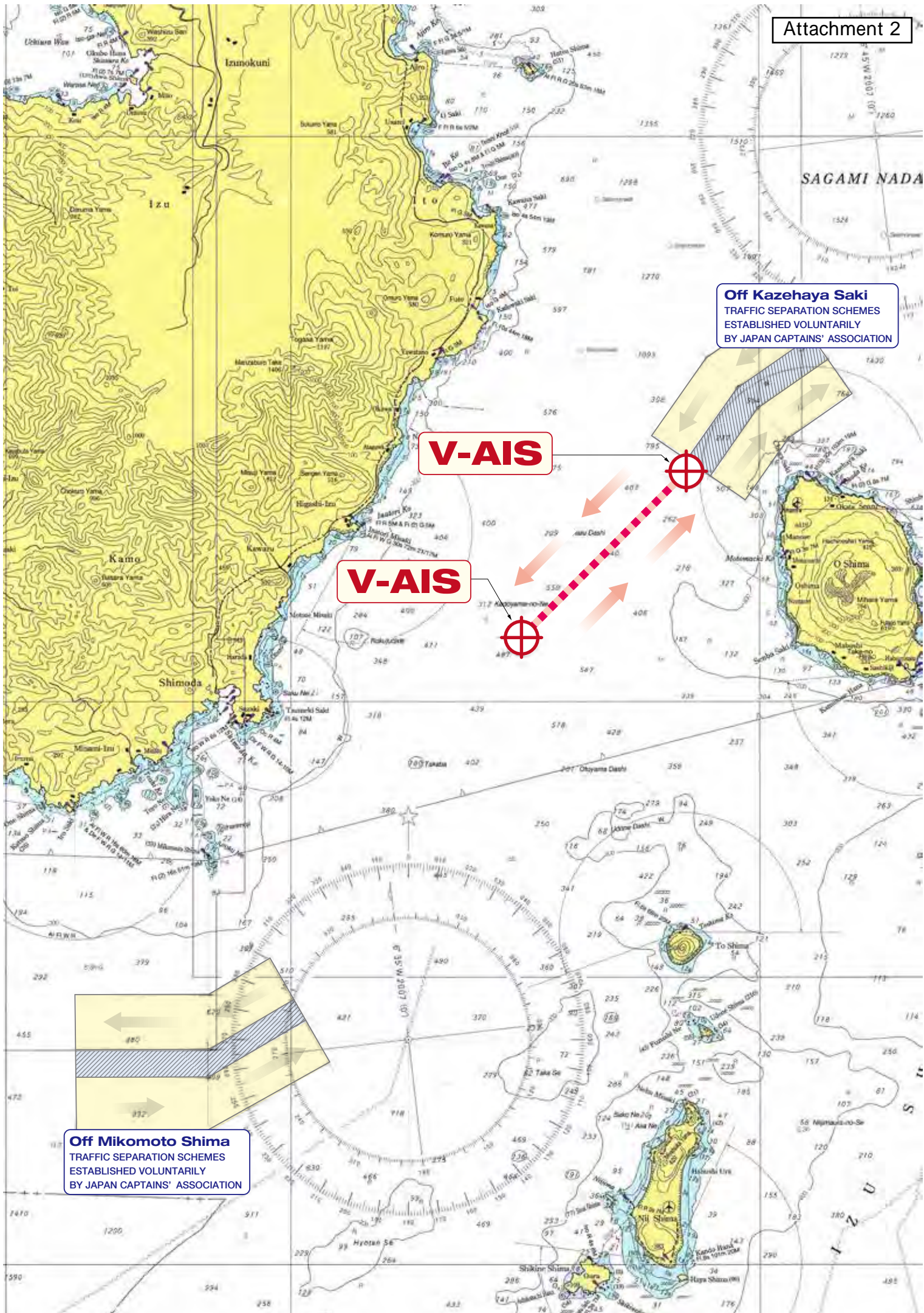
Charts temporarily affected.--W114(1)--W103--W1118. (6th R. N.M. No. 43/810 of 2017.)

We set the recommended route on 1 January, 2018.
It is requested to keep the starboard side of the center line for the safety of navigation.



- We set the recommended course off the west coast of Izu O Shima Island on 1 January, 2018 at 00:00 UTC (09:00 JST).
- The recommended route is a route of undefined width, which is shown by the center line, based on the SOLAS convention.
- Ships navigating off the west coast of Izu O Shima Island are requested to keep the starboard side of the center line.
- The north and south ends of the recommended route are shown by the symbol mark(*) for portrayal of the virtual AIS.
 North end of the recommended route: 34-48-00 N 139-17-00 E
 South end of the recommended route: 34-42-12 N 139-10-00 E
- () The virtual AIS (V-AIS) is the Aids to Navigation showing the symbol mark(s) on the radar(s) or ENC(s) virtually. Please be advised that if ships aren't equipped with AIS, these symbol marks are not shown.
- It is also requested that the chart users should update the charts by acquiring necessary information by Notices to Mariners.
 (Click here for Notices to Mariners.) http://www1.kaiho.mlit.go.jp/TUHO/tuho/nm_en.html

【Inquiry】 ☎231-8818 5-57, Kita Nakadori, Naka-ku, Yokohama City
 Navigation Safety Division, Maritime Traffic Department,
 3rd Regional Coast Guard Headquarters 045-211-1118



Off Kazezahaya Saki
TRAFFIC SEPARATION SCHEMES
ESTABLISHED VOLUNTARILY
BY JAPAN CAPTAINS' ASSOCIATION

V-AIS

V-AIS

Off Mikomoto Shima
TRAFFIC SEPARATION SCHEMES
ESTABLISHED VOLUNTARILY
BY JAPAN CAPTAINS' ASSOCIATION