

JAPAN P&I NEWS

No.920-17/09/12

To the Members

Dear Sirs,

Gulf of Aden, Bab Al Mandeb, Southern Red Sea **Guidance on Maritime Security Transit Corridor**

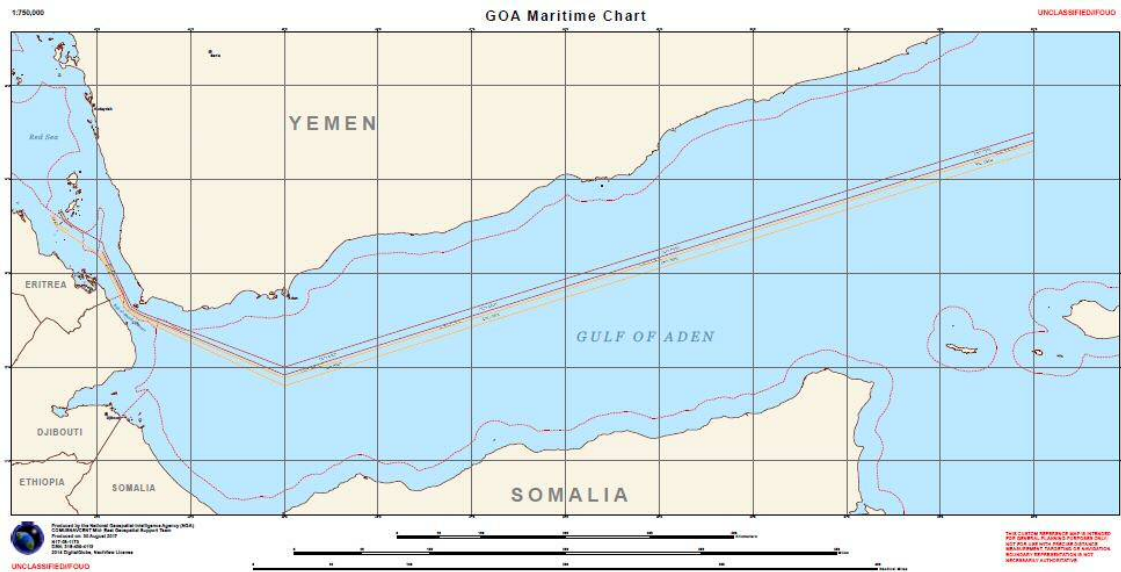
We have obtained the information on the captioned topic from the Combined Maritime Forces (CMF) as per attached.

According to the guidance, due to the higher risk of attacks against merchant vessels transiting through the Gulf of Aden, Bab Al Mandeb (BaM), Southern Red Sea and associated waters, CMF is establishing a Maritime Security Transit Corridor (MSTC). These charts are shown as follows:-

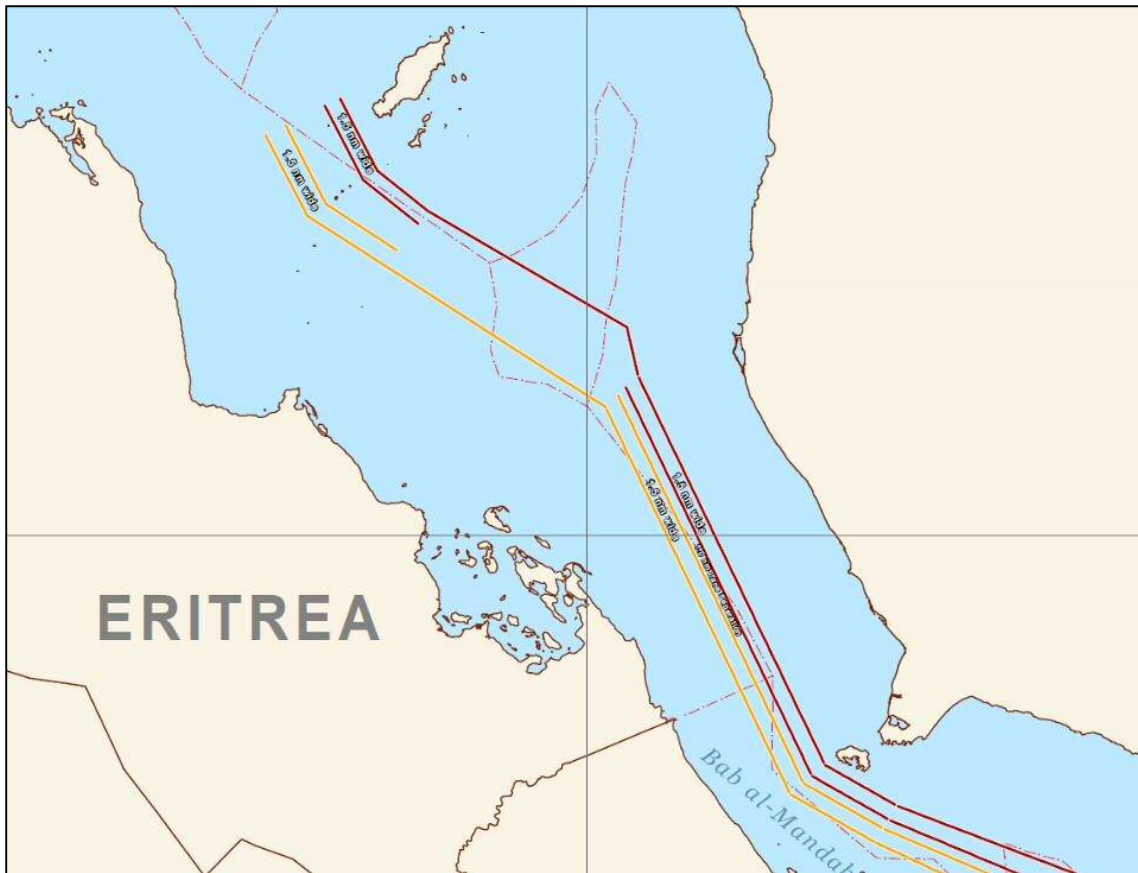
//QT//

The MSTC will consist of:

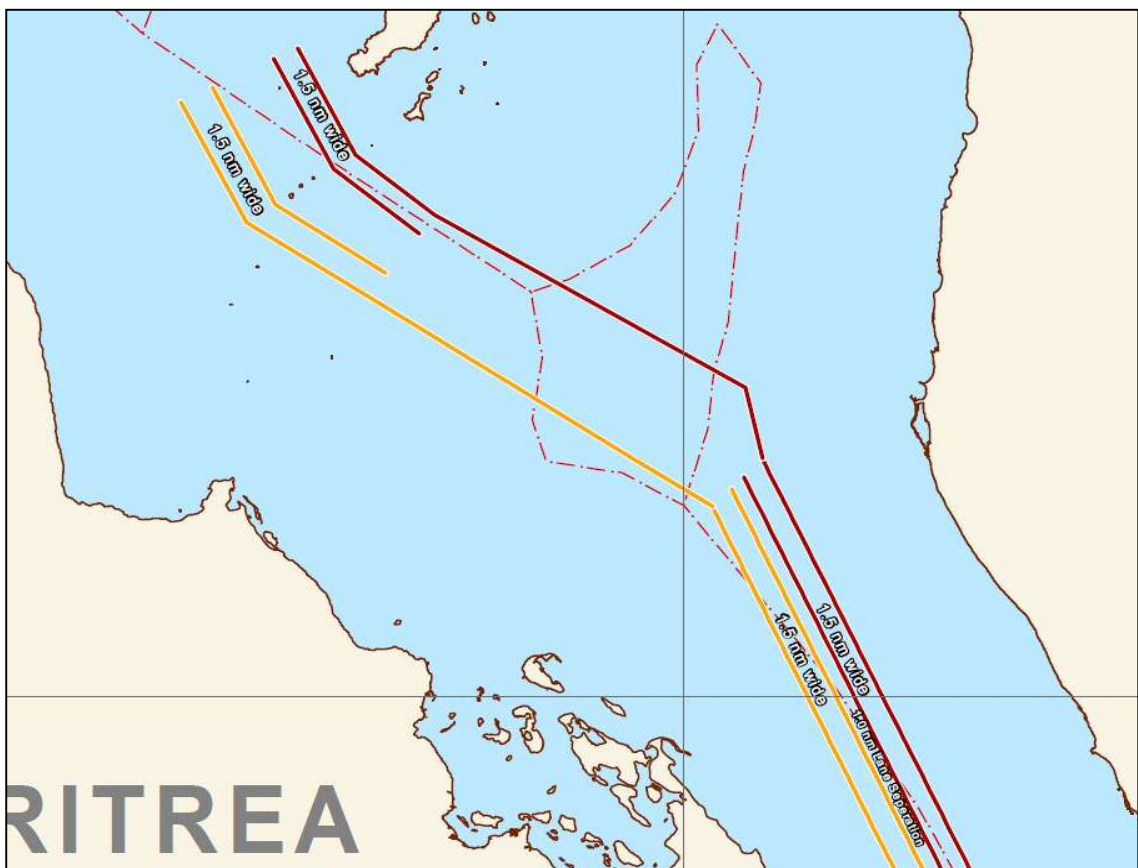
- The Internationally Recommended Transit Corridor (IRTC)



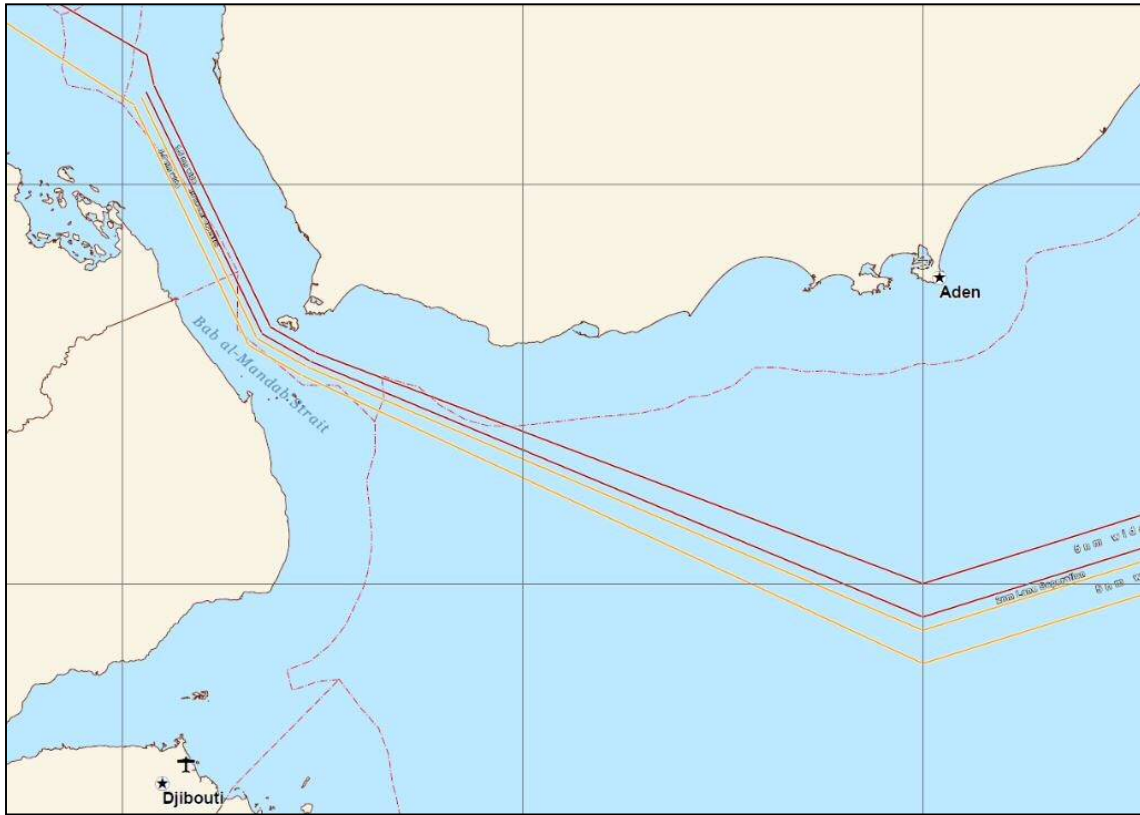
- The BAM TSS and the TSS West of the Hanish Islands



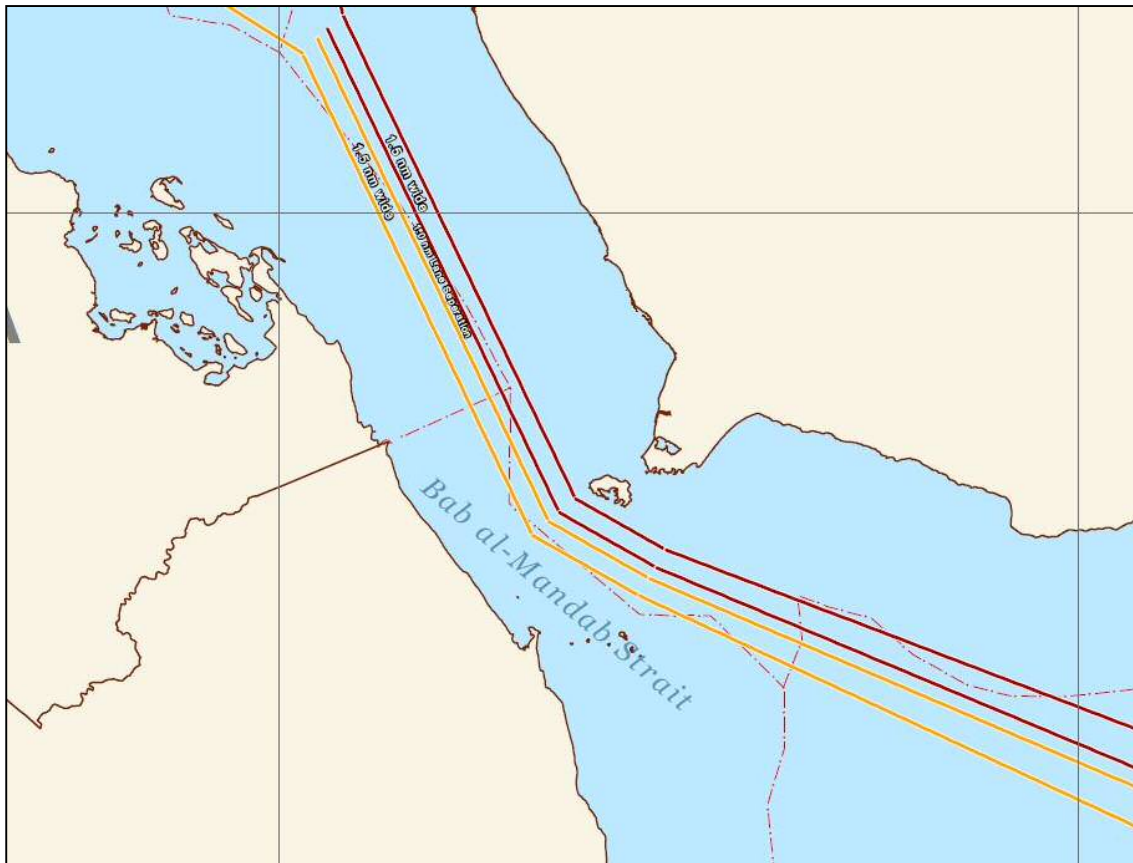
<Enlarged image of the BAM TSS West of the Hanish Islands>



- A two-way route directly connecting the IRTC and the BAM TSS



<Enlarged image of two-way route directly connecting the IRTC and the BAM TSS>



//UNQT//

Members considering to transit through the above areas should take note the attached guidance and obtain all available information from the related organizations and the relevant parities for your risk assessments. We hope it will be of help to you with regard to the safe voyaging.

Yours faithfully,

The Japan Ship Owners' Mutual Protection & Indemnity Association

Loss Prevention and Ship Inspection Department

Tel: +81 3 3662 7229

Fax: +81 3 3662 7107

E-mail: lossprevention-dpt@piclub.or.jp

Website: <https://www.piclub.or.jp>

Attachment: Guidance issued by CMF dated 6th September 2017



Commander, Combined Maritime Forces
Office of Public Affairs
www.CombinedMaritimeForces.com

PRESS RELEASE

6 Sept 2017

GUIDANCE ON MARITIME SECURITY TRANSIT CORRIDOR

The following information from the Combined Maritime Forces (CMF) relates to transits through the Gulf of Aden, Bab Al Mandeb (BaM), Southern Red Sea, and associated waters. It does not replace any previous guidance.

Recent attacks against merchant shipping in the Gulf of Aden and Bab Al Mandeb have highlighted the risks associated with transiting these waters. The multiple types of risks and the broad expanse of ocean on which these attacks can occur dictate that Naval Forces must be used in the most efficient manner possible. To assist in this, CMF is establishing a Maritime Security Transit Corridor (MSTC).

The MSTC will consist of:

- The Internationally Recommended Transit Corridor (IRTC)
- The BAM TSS and the TSS West of the Hanish Islands
- A two-way route directly connecting the IRTC and the BAM TSS

When combined, these sections as a whole will be termed the MSTC. The purpose of this corridor is to provide a recommended merchant traffic route around which Naval Forces can focus their presence and surveillance efforts. It is recommended that all vessels use the MSTC to benefit from military presence and surveillance.

The formation of the MSTC has no effect on the use or timings of Group Sails or escorted transits of the IRTC. These will continue to be scheduled and executed as they have in the past. The IRTC end points will remain existent.

Operating in these waters requires thorough planning and the use of all available information. The maritime threat environment is dynamic; the risks will not remain constant for subsequent visits. It is essential therefore, that Masters, Ship Security Officers and Company Security Officers carry out detailed Risk Assessments for each voyage to the region and for each activity within the region.

All vessels transiting the Gulf of Aden and Bab Al Mandeb should follow the guidance of BMP4 to the maximum extent possible and consider the use of embarked armed security. Recent piracy attacks in 2017 serve to emphasise the importance of robustly following this guidance.

This guidance is in no way directive. The use of the IRTC, MSTC, BMP4, armed security, shifting transit times, or any other defensive measures remain the sole decision of the vessel operator based on its own dedicated risk assessment and the requirements of the flag state.

ENDS

NOTES TO EDITORS:

Combined Maritime Forces (CMF) is a multi-national naval partnership founded in 2002. It exists to promote security, stability and prosperity across approximately 3.2 million square miles of international waters, which encompass some of the world's most important shipping lanes. CMF's main focus areas are defeating terrorism, preventing piracy, encouraging regional cooperation, and promoting a safe maritime environment.

For further questions, please contact:
Combined Maritime Forces Public Affairs
Tel Office: + 973 1785 9981 / 4942

Email: Mark.Vickers.GB@me.navy.mil
www.CombinedMaritimeForces.com
http://twitter.com/#!/CMF_Bahrain
Facebook: [Combined Maritime Forces](#)